

# Basis Report

23-Feb-24 17:00:43



Start time: 22-Feb-24 11:51:03 Analyst: THERMOF-6VBH8PN\ICPMS-User  
Technique: eQuant Instrument setup: iCAP RQ, ASX-560

File: \_Application Data\Workspace\LabBooks\2024\_02\_22\_M28RuPdRe\_Ridha\_Poettker-Menke\_Sons-goe\_mtr.imexp

Batch ID:

Result Data Set: 2024\_02\_22\_M28RuPdRe\_Ridha\_Poettker-Menke\_Sons-goe\_mtr.imexp

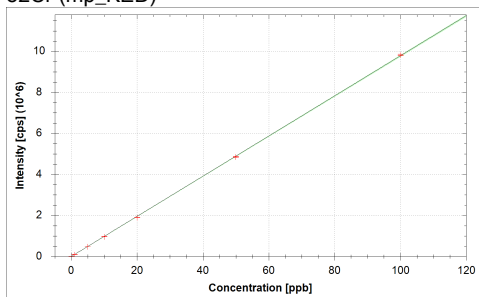
Result Path: \_Application Data\Workspace\LabBooks

Method Loaed

Method Name: 2024\_02\_22\_M28RuPdRe\_Ridha\_Poettker-Menke\_Sons-goe\_mtr.imexp

Method Last Saved: 23-Feb-24 17:00:10

52Cr (mp\_KED)



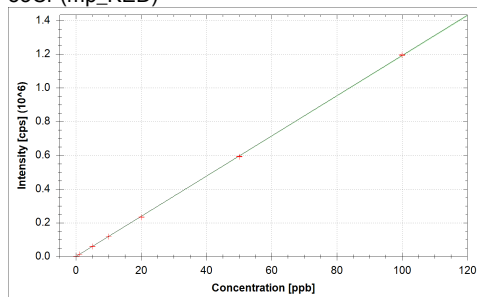
$$f(x) = 97834.7768 \cdot x + 386.2577$$

$$R^2 = 0.9999$$

$$\text{BEC} = 0.004 \text{ ppb}$$

$$\text{LoD} = 0.0011 \text{ ppb}$$

53Cr (mp\_KED)



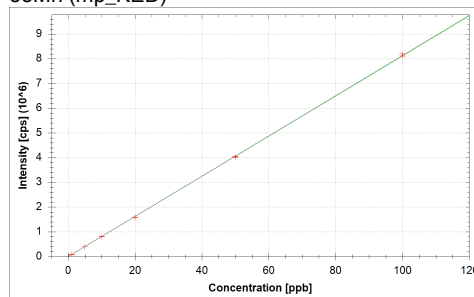
$$f(x) = 11922.0941 \cdot x + 184.5022$$

$$R^2 = 1.0000$$

$$\text{BEC} = 0.015 \text{ ppb}$$

$$\text{LoD} = 0.0093 \text{ ppb}$$

55Mn (mp\_KED)



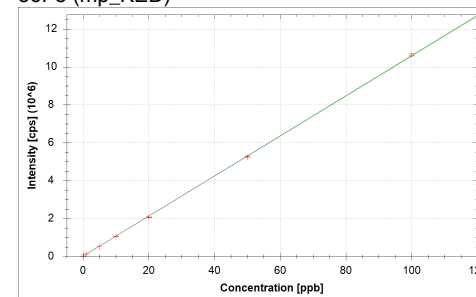
$$f(x) = 81231.4461 \cdot x + 225.2531$$

$$R^2 = 0.9999$$

$$\text{BEC} = 0.003 \text{ ppb}$$

$$\text{LoD} = 0.0012 \text{ ppb}$$

56Fe (mp\_KED)



$$f(x) = 105709.8745 \cdot x + 20147.8547$$

$$R^2 = 0.9999$$

$$\text{BEC} = 0.191 \text{ ppb}$$

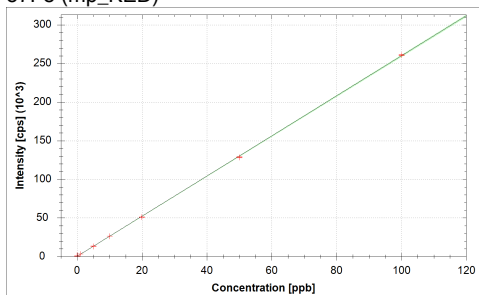
$$\text{LoD} = 0.0115 \text{ ppb}$$

# Basis Report

23-Feb-24 17:00:43



57Fe (mp\_KED)



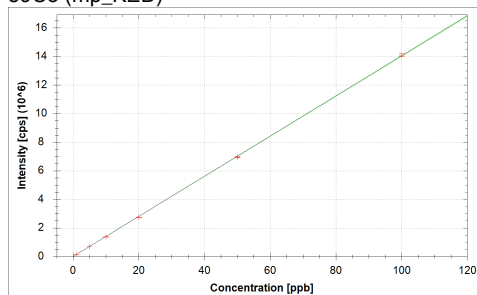
$$f(x) = 2597.3468 \cdot x + 261.7539$$

$$R^2 = 0.9999$$

$$\text{BEC} = 0.101 \text{ ppb}$$

$$\text{LoD} = 0.0586 \text{ ppb}$$

59Co (mp\_KED)



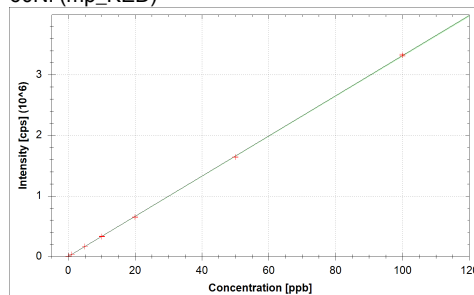
$$f(x) = 140427.6413 \cdot x + 484.7616$$

$$R^2 = 0.9999$$

$$\text{BEC} = 0.003 \text{ ppb}$$

$$\text{LoD} = 0.0003 \text{ ppb}$$

60Ni (mp\_KED)



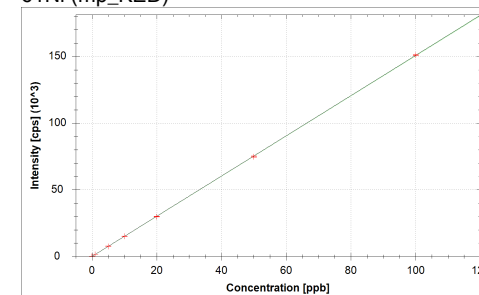
$$f(x) = 33156.2875 \cdot x + 885.0353$$

$$R^2 = 0.9999$$

$$\text{BEC} = 0.027 \text{ ppb}$$

$$\text{LoD} = 0.0011 \text{ ppb}$$

61Ni (mp\_KED)



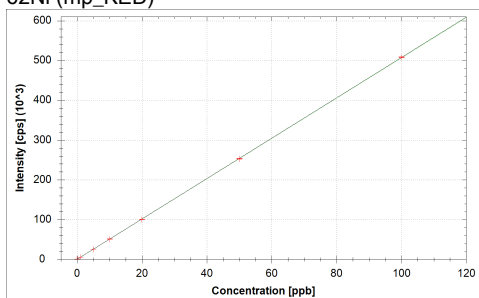
$$f(x) = 1507.1878 \cdot x + 34.2502$$

$$R^2 = 1.0000$$

$$\text{BEC} = 0.023 \text{ ppb}$$

$$\text{LoD} = 0.0140 \text{ ppb}$$

62Ni (mp\_KED)



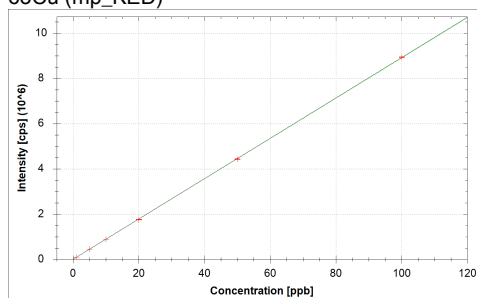
$$f(x) = 5075.1179 \cdot x + 129.7513$$

$$R^2 = 1.0000$$

$$\text{BEC} = 0.026 \text{ ppb}$$

$$\text{LoD} = 0.0097 \text{ ppb}$$

63Cu (mp\_KED)



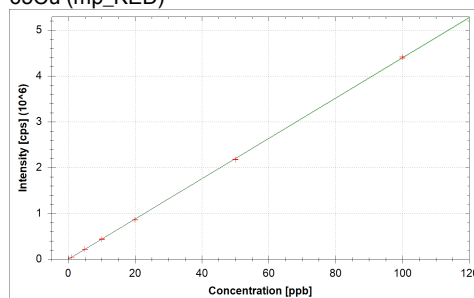
$$f(x) = 89151.8275 \cdot x + 1957.9120$$

$$R^2 = 1.0000$$

$$\text{BEC} = 0.022 \text{ ppb}$$

$$\text{LoD} = 0.0011 \text{ ppb}$$

65Cu (mp\_KED)



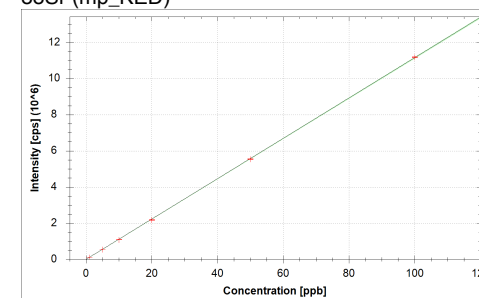
$$f(x) = 43959.1866 \cdot x + 985.2928$$

$$R^2 = 0.9999$$

$$\text{BEC} = 0.022 \text{ ppb}$$

$$\text{LoD} = 0.0023 \text{ ppb}$$

88Sr (mp\_KED)



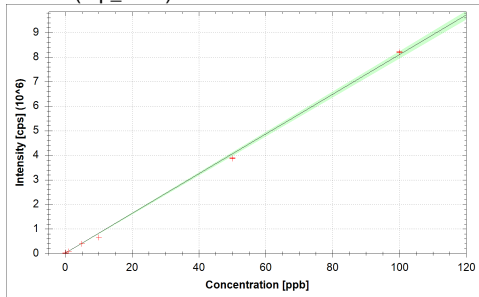
$$f(x) = 111504.4507 \cdot x + 143.0015$$

$$R^2 = 0.9999$$

$$\text{BEC} = 0.001 \text{ ppb}$$

$$\text{LoD} = 0.0002 \text{ ppb}$$

105Pd (mp\_KED)



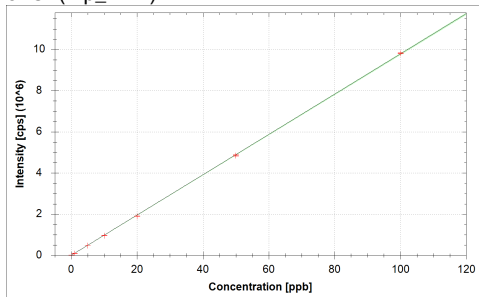
$$f(x) = 80820.7102 \cdot x + 16978.0657$$

$$R^2 = 0.9988$$

$$\text{BEC} = 0.210 \text{ ppb}$$

$$\text{LoD} = 0.0056 \text{ ppb}$$

52Cr (mp\_KED)



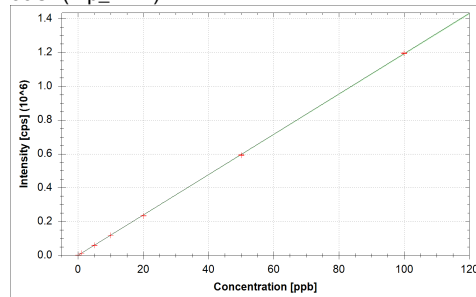
$$f(x) = 97834.7768 \cdot x + 386.2577$$

$$R^2 = 0.9999$$

$$\text{BEC} = 0.004 \text{ ppb}$$

$$\text{LoD} = 0.0011 \text{ ppb}$$

53Cr (mp\_KED)



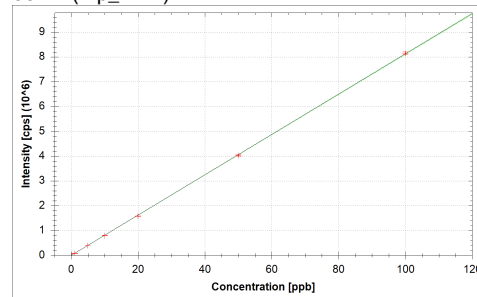
$$f(x) = 11922.0941 \cdot x + 184.5022$$

$$R^2 = 1.0000$$

$$\text{BEC} = 0.015 \text{ ppb}$$

$$\text{LoD} = 0.0093 \text{ ppb}$$

55Mn (mp\_KED)



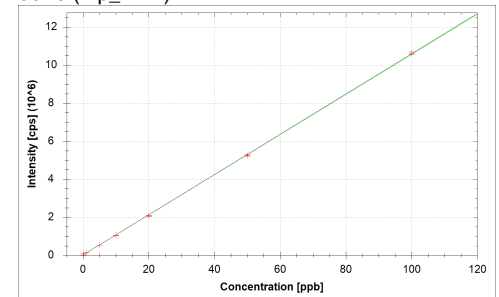
$$f(x) = 81231.4461 \cdot x + 225.2531$$

$$R^2 = 0.9999$$

$$\text{BEC} = 0.003 \text{ ppb}$$

$$\text{LoD} = 0.0012 \text{ ppb}$$

56Fe (mp\_KED)



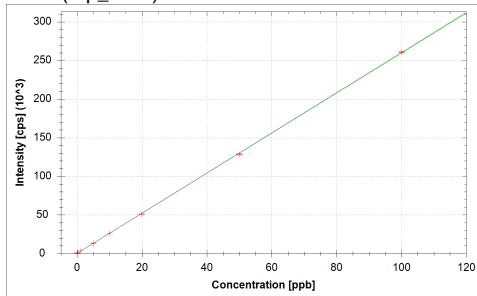
$$f(x) = 105709.8745 \cdot x + 20147.8547$$

$$R^2 = 0.9999$$

$$\text{BEC} = 0.191 \text{ ppb}$$

$$\text{LoD} = 0.0115 \text{ ppb}$$

57Fe (mp\_KED)



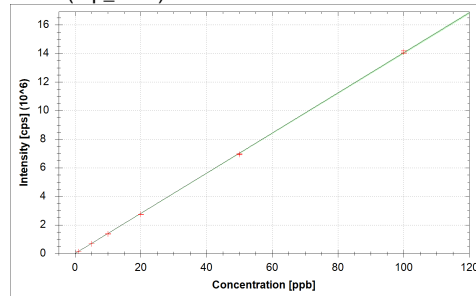
$$f(x) = 2597.3468 \cdot x + 261.7539$$

$$R^2 = 0.9999$$

$$\text{BEC} = 0.101 \text{ ppb}$$

$$\text{LoD} = 0.0586 \text{ ppb}$$

59Co (mp\_KED)



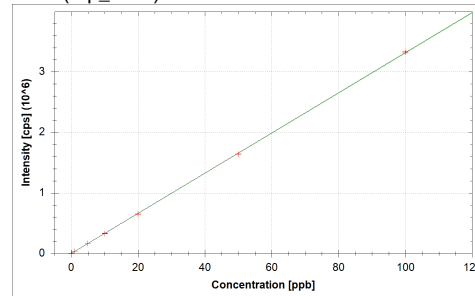
$$f(x) = 140427.6413 \cdot x + 484.7616$$

$$R^2 = 0.9999$$

$$\text{BEC} = 0.003 \text{ ppb}$$

$$\text{LoD} = 0.0003 \text{ ppb}$$

60Ni (mp\_KED)



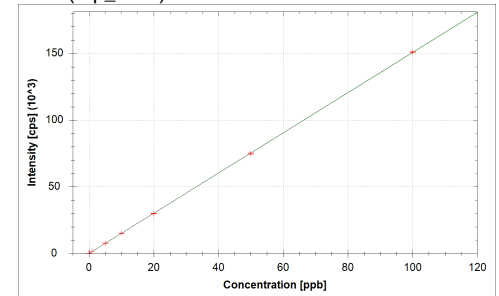
$$f(x) = 33156.2875 \cdot x + 885.0353$$

$$R^2 = 0.9999$$

$$\text{BEC} = 0.027 \text{ ppb}$$

$$\text{LoD} = 0.0011 \text{ ppb}$$

61Ni (mp\_KED)



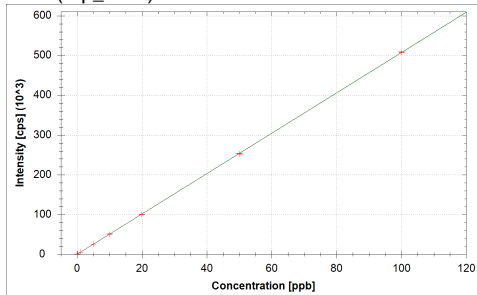
$$f(x) = 1507.1878 \cdot x + 34.2502$$

$$R^2 = 1.0000$$

$$\text{BEC} = 0.023 \text{ ppb}$$

$$\text{LoD} = 0.0140 \text{ ppb}$$

62Ni (mp\_KED)



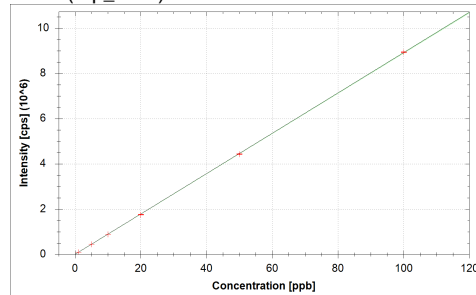
$$f(x) = 5075.1179 \cdot x + 129.7513$$

$$R^2 = 1.0000$$

$$\text{BEC} = 0.026 \text{ ppb}$$

$$\text{LoD} = 0.0097 \text{ ppb}$$

63Cu (mp\_KED)



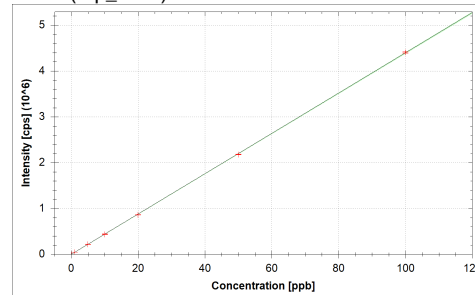
$$f(x) = 89151.8275 \cdot x + 1957.9120$$

$$R^2 = 1.0000$$

$$\text{BEC} = 0.022 \text{ ppb}$$

$$\text{LoD} = 0.0011 \text{ ppb}$$

65Cu (mp\_KED)



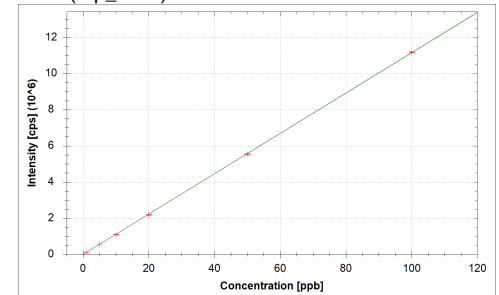
$$f(x) = 43959.1866 \cdot x + 985.2928$$

$$R^2 = 0.9999$$

$$\text{BEC} = 0.022 \text{ ppb}$$

$$\text{LoD} = 0.0023 \text{ ppb}$$

88Sr (mp\_KED)



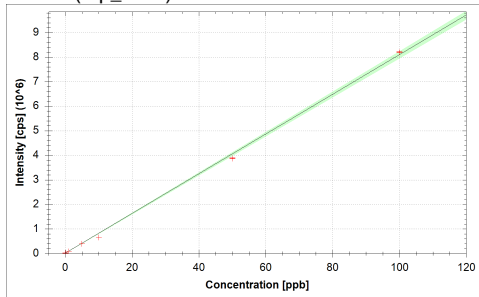
$$f(x) = 111504.4507 \cdot x + 143.0015$$

$$R^2 = 0.9999$$

$$\text{BEC} = 0.001 \text{ ppb}$$

$$\text{LoD} = 0.0002 \text{ ppb}$$

105Pd (mp\_KED)



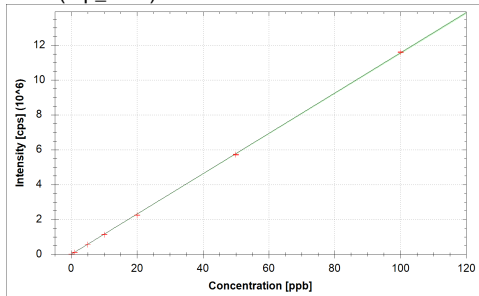
$$f(x) = 80820.7102 \cdot x + 16978.0657$$

$$R^2 = 0.9988$$

$$\text{BEC} = 0.210 \text{ ppb}$$

$$\text{LoD} = 0.0056 \text{ ppb}$$

52Cr (mp\_KED)



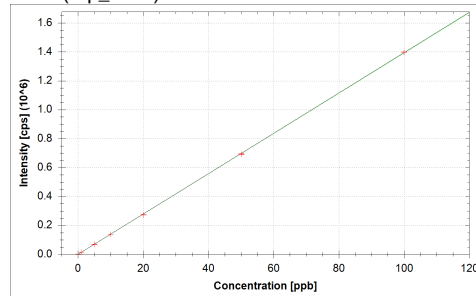
$$f(x) = 115521.0661 \cdot x + 456.0842$$

$$R^2 = 0.9999$$

$$\text{BEC} = 0.004 \text{ ppb}$$

$$\text{LoD} = 0.0010 \text{ ppb}$$

53Cr (mp\_KED)



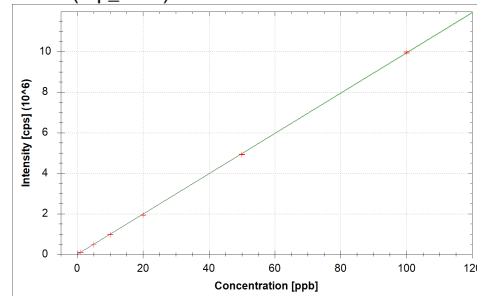
$$f(x) = 13940.7525 \cdot x + 215.7423$$

$$R^2 = 1.0000$$

$$\text{BEC} = 0.015 \text{ ppb}$$

$$\text{LoD} = 0.0079 \text{ ppb}$$

55Mn (mp\_KED)



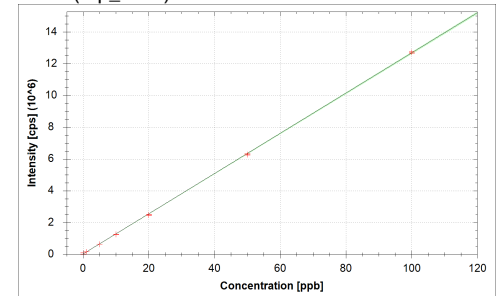
$$f(x) = 99352.6993 \cdot x + 275.5030$$

$$R^2 = 0.9999$$

$$\text{BEC} = 0.003 \text{ ppb}$$

$$\text{LoD} = 0.0010 \text{ ppb}$$

56Fe (mp\_KED)



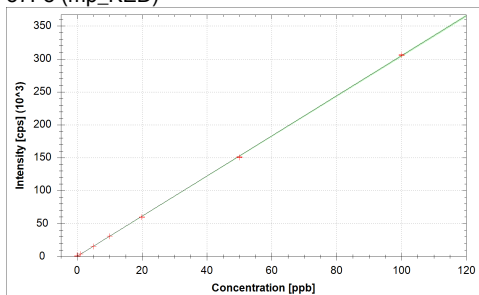
$$f(x) = 126536.5322 \cdot x + 24117.3276$$

$$R^2 = 0.9999$$

$$\text{BEC} = 0.191 \text{ ppb}$$

$$\text{LoD} = 0.0096 \text{ ppb}$$

57Fe (mp\_KED)



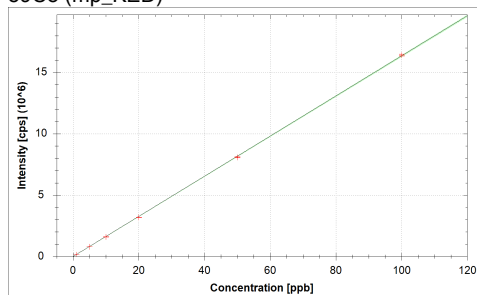
$$f(x) = 3044.5358 \cdot x + 306.8204$$

$$R^2 = 0.9999$$

$$\text{BEC} = 0.101 \text{ ppb}$$

$$\text{LoD} = 0.0500 \text{ ppb}$$

59Co (mp\_KED)



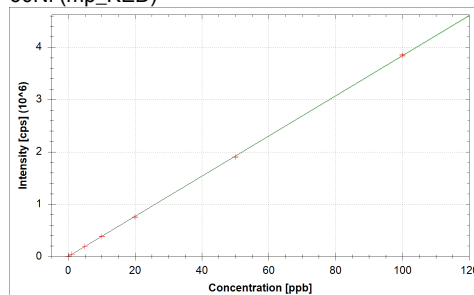
$$f(x) = 163517.6019 \cdot x + 564.4690$$

$$R^2 = 0.9999$$

$$\text{BEC} = 0.003 \text{ ppb}$$

$$\text{LoD} = 0.0002 \text{ ppb}$$

60Ni (mp\_KED)



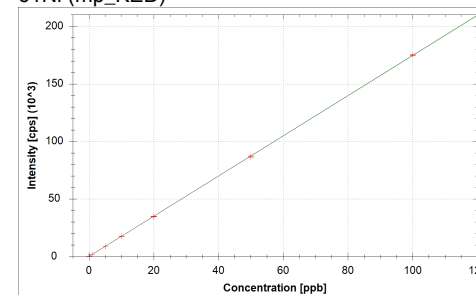
$$f(x) = 38378.5335 \cdot x + 1024.4318$$

$$R^2 = 0.9999$$

$$\text{BEC} = 0.027 \text{ ppb}$$

$$\text{LoD} = 0.0009 \text{ ppb}$$

61Ni (mp\_KED)



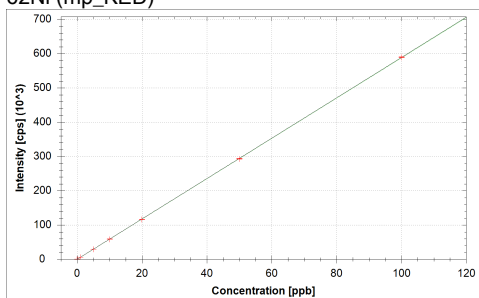
$$f(x) = 1746.3709 \cdot x + 39.6855$$

$$R^2 = 1.0000$$

$$\text{BEC} = 0.023 \text{ ppb}$$

$$\text{LoD} = 0.0121 \text{ ppb}$$

62Ni (mp\_KED)



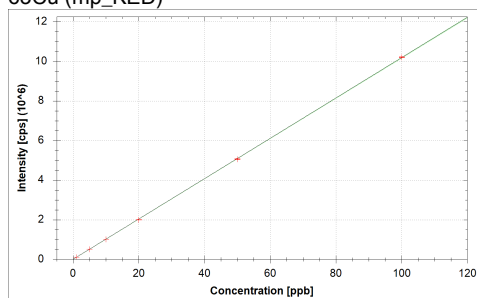
$$f(x) = 5882.9741 \cdot x + 150.4051$$

$$R^2 = 1.0000$$

$$\text{BEC} = 0.026 \text{ ppb}$$

$$\text{LoD} = 0.0083 \text{ ppb}$$

63Cu (mp\_KED)



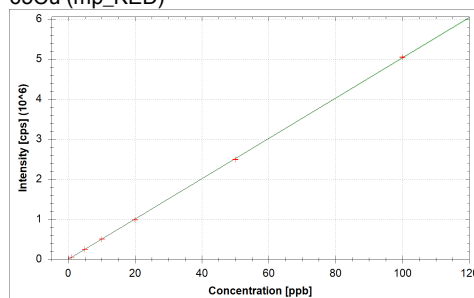
$$f(x) = 101795.1118 \cdot x + 2235.5781$$

$$R^2 = 1.0000$$

$$\text{BEC} = 0.022 \text{ ppb}$$

$$\text{LoD} = 0.0010 \text{ ppb}$$

65Cu (mp\_KED)



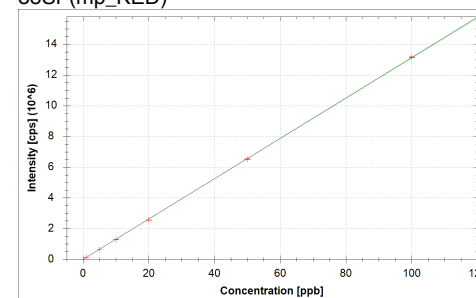
$$f(x) = 50338.7599 \cdot x + 1128.2834$$

$$R^2 = 0.9999$$

$$\text{BEC} = 0.022 \text{ ppb}$$

$$\text{LoD} = 0.0020 \text{ ppb}$$

88Sr (mp\_KED)



$$f(x) = 131228.9456 \cdot x + 168.2976$$

$$R^2 = 0.9999$$

$$\text{BEC} = 0.001 \text{ ppb}$$

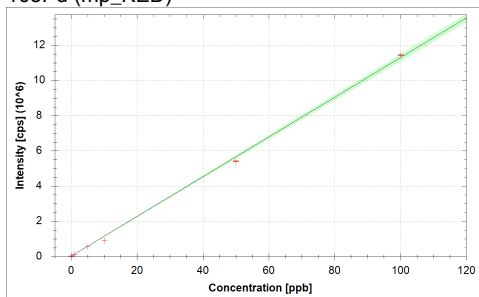
$$\text{LoD} = 0.0002 \text{ ppb}$$

# Basis Report

23-Feb-24 17:00:43



105Pd (mp\_KED)



$$f(x) = 112699.4125 \cdot x + 23674.8481$$

$$R^2 = 0.9988$$

$$\text{BEC} = 0.210 \text{ ppb}$$

$$\text{LoD} = 0.0040 \text{ ppb}$$

# Basis Report

23-Feb-24 17:00:43



Start Time 22-Feb-24 11:51:17 Sample Type UNKNOWN Comment <Comment> Final Quantity  
Label Rinse HNO3 2% Dilution Factor 1 Amount

| Category       | Concentration average | Concentration RSD | Intensity average | Intensity RSD |
|----------------|-----------------------|-------------------|-------------------|---------------|
| 52Cr (mp_KED)  | 0.052 ppb             | 1.8 %             | 5,426 cps         | 1.7 %         |
| 53Cr (mp_KED)  | 0.069 ppb             | 2.7 %             | 1,004 cps         | 2.2 %         |
| 55Mn (mp_KED)  | 0.003 ppb             | 3.2 %             | 446 cps           | 1.6 %         |
| 56Fe (mp_KED)  | 0.517 ppb             | 0.5 %             | 74,762 cps        | 0.3 %         |
| 57Fe (mp_KED)  | 0.520 ppb             | 0.6 %             | 1,612 cps         | 0.5 %         |
| 59Co (mp_KED)  | -0.001 ppb            | 5.7 %             | 365 cps           | 1.9 %         |
| 60Ni (mp_KED)  | 0.018 ppb             | 4.9 %             | 1,494 cps         | 2.0 %         |
| 61Ni (mp_KED)  | 0.024 ppb             | 20.3 %            | 71 cps            | 10.5 %        |
| 62Ni (mp_KED)  | 0.018 ppb             | 14.0 %            | 219 cps           | 5.7 %         |
| 63Cu (mp_KED)  | 0.003 ppb             | 18.3 %            | 2,205 cps         | 2.1 %         |
| 65Cu (mp_KED)  | 0.002 ppb             | 21.5 %            | 1,086 cps         | 2.0 %         |
| 88Sr (mp_KED)  | 0.000 ppb             | 23.3 %            | 97 cps            | 11.1 %        |
| 105Pd (mp_KED) | -0.136 ppb            | 2.8 %             | 5,986 cps         | 5.1 %         |



# Basis Report

23-Feb-24 17:00:43



Start Time 22-Feb-24 11:56:24 Sample Type UNKNOWN Comment <Comment> Final Quantity  
Label Rinse HNO3 2% Dilution Factor 1 Amount

| Category       | Concentration average | Concentration RSD | Intensity average | Intensity RSD |
|----------------|-----------------------|-------------------|-------------------|---------------|
| 52Cr (mp_KED)  | 0.051 ppb             | 3.1 %             | 5,376 cps         | 2.9 %         |
| 53Cr (mp_KED)  | 0.068 ppb             | 0.6 %             | 994 cps           | 0.5 %         |
| 55Mn (mp_KED)  | 0.003 ppb             | 5.9 %             | 475 cps           | 3.1 %         |
| 56Fe (mp_KED)  | 0.529 ppb             | 0.7 %             | 76,073 cps        | 0.5 %         |
| 57Fe (mp_KED)  | 0.525 ppb             | 3.3 %             | 1,626 cps         | 2.7 %         |
| 59Co (mp_KED)  | -0.001 ppb            | 22.1 %            | 362 cps           | 7.5 %         |
| 60Ni (mp_KED)  | 0.018 ppb             | 11.9 %            | 1,478 cps         | 4.8 %         |
| 61Ni (mp_KED)  | 0.029 ppb             | 26.1 %            | 78 cps            | 14.5 %        |
| 62Ni (mp_KED)  | 0.019 ppb             | 8.4 %             | 225 cps           | 3.6 %         |
| 63Cu (mp_KED)  | 0.003 ppb             | 40.2 %            | 2,191 cps         | 4.3 %         |
| 65Cu (mp_KED)  | 0.004 ppb             | 16.5 %            | 1,151 cps         | 2.4 %         |
| 88Sr (mp_KED)  | 0.000 ppb             | 16.8 %            | 88 cps            | 10.4 %        |
| 105Pd (mp_KED) | -0.143 ppb            | 1.3 %             | 5,383 cps         | 2.8 %         |

# Basis Report

23-Feb-24 17:00:43



Start Time 22-Feb-24 12:01:31 Sample Type BLK Comment <Comment> Final Quantity  
Label Rinse HNO3 2% Dilution Factor 1 Amount

| Category       | Concentration average | Concentration RSD | Intensity average | Intensity RSD |
|----------------|-----------------------|-------------------|-------------------|---------------|
| 52Cr (mp_KED)  | 0.052 ppb             | 0.7 %             | 5,478 cps         | 0.7 %         |
| 53Cr (mp_KED)  | 0.067 ppb             | 4.6 %             | 979 cps           | 3.8 %         |
| 55Mn (mp_KED)  | 0.003 ppb             | 13.5 %            | 472 cps           | 7.1 %         |
| 56Fe (mp_KED)  | 0.533 ppb             | 0.7 %             | 76,498 cps        | 0.5 %         |
| 57Fe (mp_KED)  | 0.532 ppb             | 3.7 %             | 1,643 cps         | 3.1 %         |
| 59Co (mp_KED)  | -0.001 ppb            | 9.3 %             | 355 cps           | 3.4 %         |
| 60Ni (mp_KED)  | 0.019 ppb             | 1.8 %             | 1,521 cps         | 0.8 %         |
| 61Ni (mp_KED)  | 0.025 ppb             | 18.9 %            | 72 cps            | 9.9 %         |
| 62Ni (mp_KED)  | 0.019 ppb             | 16.5 %            | 229 cps           | 7.2 %         |
| 63Cu (mp_KED)  | 0.002 ppb             | 15.5 %            | 2,169 cps         | 1.5 %         |
| 65Cu (mp_KED)  | 0.002 ppb             | 46.2 %            | 1,058 cps         | 3.2 %         |
| 88Sr (mp_KED)  | 0.000 ppb             | 16.2 %            | 92 cps            | 9.1 %         |
| 105Pd (mp_KED) | -0.144 ppb            | 1.3 %             | 5,309 cps         | 2.8 %         |

# Basis Report

23-Feb-24 17:00:43



Start Time 22-Feb-24 12:06:38 Sample Type STD Comment <Comment> Final Quantity  
Label M28RuPdRe 0 ppb 300µL HNO3 30.10.2023 mtr Dilution Factor 1 Amount

| Category       | Concentration average | Concentration RSD | Intensity average | Intensity RSD |
|----------------|-----------------------|-------------------|-------------------|---------------|
| 52Cr (mp_KED)  | 0.005 ppb             | 7.7 %             | 834 cps           | 4.1 %         |
| 53Cr (mp_KED)  | 0.016 ppb             | 7.0 %             | 380 cps           | 3.6 %         |
| 55Mn (mp_KED)  | 0.000 ppb             | 47.0 %            | 258 cps           | 6.0 %         |
| 56Fe (mp_KED)  | 0.106 ppb             | 3.8 %             | 31,303 cps        | 1.4 %         |
| 57Fe (mp_KED)  | 0.100 ppb             | 8.8 %             | 522 cps           | 4.4 %         |
| 59Co (mp_KED)  | -0.001 ppb            | 6.2 %             | 303 cps           | 3.7 %         |
| 60Ni (mp_KED)  | 0.007 ppb             | 9.6 %             | 1,105 cps         | 1.9 %         |
| 61Ni (mp_KED)  | 0.010 ppb             | 54.5 %            | 49 cps            | 16.4 %        |
| 62Ni (mp_KED)  | 0.005 ppb             | 43.0 %            | 157 cps           | 7.5 %         |
| 63Cu (mp_KED)  | 0.024 ppb             | 2.4 %             | 4,097 cps         | 1.3 %         |
| 65Cu (mp_KED)  | 0.024 ppb             | 2.9 %             | 2,022 cps         | 1.5 %         |
| 88Sr (mp_KED)  | 0.000 ppb             | 78.4 %            | 162 cps           | 9.1 %         |
| 105Pd (mp_KED) | -0.190 ppb            | 33.8 %            | 1,606 cps         | 323.9 %       |

# Basis Report

23-Feb-24 17:00:43



Start Time 22-Feb-24 12:11:44 Sample Type STD Comment <Comment> Final Quantity  
Label M28RuPdRe 1 ppb 300µL HNO3 30.10.2023 mtr Dilution Factor 1 Amount

| Category       | Concentration average | Concentration RSD | Intensity average | Intensity RSD |
|----------------|-----------------------|-------------------|-------------------|---------------|
| 52Cr (mp_KED)  | 0.988 ppb             | 0.6 %             | 97,024 cps        | 0.6 %         |
| 53Cr (mp_KED)  | 1.011 ppb             | 0.8 %             | 12,238 cps        | 0.8 %         |
| 55Mn (mp_KED)  | 0.980 ppb             | 0.6 %             | 79,847 cps        | 0.6 %         |
| 56Fe (mp_KED)  | 1.146 ppb             | 0.9 %             | 141,317 cps       | 0.8 %         |
| 57Fe (mp_KED)  | 1.156 ppb             | 1.3 %             | 3,265 cps         | 1.2 %         |
| 59Co (mp_KED)  | 0.971 ppb             | 0.6 %             | 136,870 cps       | 0.6 %         |
| 60Ni (mp_KED)  | 1.003 ppb             | 1.3 %             | 34,151 cps        | 1.2 %         |
| 61Ni (mp_KED)  | 1.015 ppb             | 1.6 %             | 1,564 cps         | 1.5 %         |
| 62Ni (mp_KED)  | 1.010 ppb             | 1.1 %             | 5,257 cps         | 1.1 %         |
| 63Cu (mp_KED)  | 1.022 ppb             | 0.2 %             | 93,055 cps        | 0.2 %         |
| 65Cu (mp_KED)  | 1.022 ppb             | 1.0 %             | 45,922 cps        | 0.9 %         |
| 88Sr (mp_KED)  | 0.945 ppb             | 0.7 %             | 105,541 cps       | 0.7 %         |
| 105Pd (mp_KED) | 0.514 ppb             | 1.6 %             | 58,547 cps        | 1.1 %         |

# Basis Report

23-Feb-24 17:00:43



Start Time 22-Feb-24 12:16:51 Sample Type STD Comment <Comment> Final Quantity  
Label M28RuPdRe 5 ppb 300µL HNO3 30.10.2023 mtr Dilution Factor 1 Amount

| Category       | Concentration average | Concentration RSD | Intensity average | Intensity RSD |
|----------------|-----------------------|-------------------|-------------------|---------------|
| 52Cr (mp_KED)  | 4.851 ppb             | 0.4 %             | 474,993 cps       | 0.4 %         |
| 53Cr (mp_KED)  | 4.894 ppb             | 0.6 %             | 58,530 cps        | 0.6 %         |
| 55Mn (mp_KED)  | 4.796 ppb             | 0.7 %             | 389,800 cps       | 0.7 %         |
| 56Fe (mp_KED)  | 5.513 ppb             | 0.5 %             | 602,954 cps       | 0.5 %         |
| 57Fe (mp_KED)  | 5.535 ppb             | 0.9 %             | 14,638 cps        | 0.9 %         |
| 59Co (mp_KED)  | 4.815 ppb             | 0.3 %             | 676,574 cps       | 0.3 %         |
| 60Ni (mp_KED)  | 4.958 ppb             | 0.4 %             | 165,274 cps       | 0.3 %         |
| 61Ni (mp_KED)  | 5.009 ppb             | 1.0 %             | 7,583 cps         | 1.0 %         |
| 62Ni (mp_KED)  | 4.956 ppb             | 0.7 %             | 25,284 cps        | 0.7 %         |
| 63Cu (mp_KED)  | 4.942 ppb             | 0.7 %             | 442,581 cps       | 0.7 %         |
| 65Cu (mp_KED)  | 4.955 ppb             | 0.4 %             | 218,786 cps       | 0.4 %         |
| 88Sr (mp_KED)  | 4.679 ppb             | 0.6 %             | 521,901 cps       | 0.6 %         |
| 105Pd (mp_KED) | 3.877 ppb             | 0.7 %             | 330,333 cps       | 0.6 %         |

# Basis Report

23-Feb-24 17:00:43



Start Time 22-Feb-24 12:21:59 Sample Type STD Comment <Comment> Final Quantity  
Label M28RuPdRe 10 ppb 300µL HNO3 30.10.2023 mtr Dilution Factor 1 Amount

| Category       | Concentration average | Concentration RSD | Intensity average | Intensity RSD |
|----------------|-----------------------|-------------------|-------------------|---------------|
| 52Cr (mp_KED)  | 9.578 ppb             | 0.7 %             | 937,469 cps       | 0.7 %         |
| 53Cr (mp_KED)  | 9.620 ppb             | 0.6 %             | 114,879 cps       | 0.6 %         |
| 55Mn (mp_KED)  | 9.509 ppb             | 0.4 %             | 772,664 cps       | 0.4 %         |
| 56Fe (mp_KED)  | 9.386 ppb             | 0.6 %             | 1,012,382 cps     | 0.6 %         |
| 57Fe (mp_KED)  | 9.493 ppb             | 0.8 %             | 24,919 cps        | 0.8 %         |
| 59Co (mp_KED)  | 9.451 ppb             | 0.8 %             | 1,327,730 cps     | 0.8 %         |
| 60Ni (mp_KED)  | 9.676 ppb             | 0.6 %             | 321,697 cps       | 0.6 %         |
| 61Ni (mp_KED)  | 9.727 ppb             | 0.7 %             | 14,695 cps        | 0.7 %         |
| 62Ni (mp_KED)  | 9.717 ppb             | 0.8 %             | 49,445 cps        | 0.8 %         |
| 63Cu (mp_KED)  | 9.677 ppb             | 0.9 %             | 864,718 cps       | 0.9 %         |
| 65Cu (mp_KED)  | 9.659 ppb             | 0.9 %             | 425,597 cps       | 0.9 %         |
| 88Sr (mp_KED)  | 9.320 ppb             | 1.1 %             | 1,039,403 cps     | 1.1 %         |
| 105Pd (mp_KED) | 4.847 ppb             | 0.8 %             | 408,676 cps       | 0.8 %         |

# Basis Report

23-Feb-24 17:00:43



Start Time 22-Feb-24 12:27:07 Sample Type STD Comment <Comment> Final Quantity  
Label M28RuPdRe 20 ppb 300µL HNO3 30.10.2023 mtr Dilution Factor 1 Amount

| Category       | Concentration average | Concentration RSD | Intensity average    | Intensity RSD |
|----------------|-----------------------|-------------------|----------------------|---------------|
| 52Cr (mp_KED)  | 18.993 ppb            | 0.3 %             | 1,858,538 cps        | 0.3 %         |
| 53Cr (mp_KED)  | 19.100 ppb            | 0.3 %             | 227,891 cps          | 0.3 %         |
| 55Mn (mp_KED)  | 18.856 ppb            | 0.5 %             | 1,531,916 cps        | 0.5 %         |
| 56Fe (mp_KED)  | 18.848 ppb            | 0.4 %             | <b>2,012,572 cps</b> | 0.4 %         |
| 57Fe (mp_KED)  | 18.992 ppb            | 0.9 %             | 49,590 cps           | 0.9 %         |
| 59Co (mp_KED)  | 18.955 ppb            | 0.5 %             | <b>2,662,255 cps</b> | 0.5 %         |
| 60Ni (mp_KED)  | 19.143 ppb            | 0.5 %             | 635,592 cps          | 0.5 %         |
| 61Ni (mp_KED)  | 19.381 ppb            | 0.6 %             | 29,245 cps           | 0.6 %         |
| 62Ni (mp_KED)  | 19.239 ppb            | 0.5 %             | 97,771 cps           | 0.5 %         |
| 63Cu (mp_KED)  | 19.188 ppb            | 0.4 %             | 1,712,567 cps        | 0.4 %         |
| 65Cu (mp_KED)  | 19.102 ppb            | 0.2 %             | 840,715 cps          | 0.2 %         |
| 88Sr (mp_KED)  | 18.630 ppb            | 0.6 %             | <b>2,077,517 cps</b> | 0.6 %         |
| 105Pd (mp_KED) | 9.744 ppb             | 0.4 %             | 804,525 cps          | 0.4 %         |

# Basis Report

23-Feb-24 17:00:43



Start Time 22-Feb-24 12:32:16 Sample Type STD Comment <Comment> Final Quantity  
Label M28RuPdRe 50 ppb 300µL HNO3 30.10.2023 mtr Dilution Factor 1 Amount

| Category       | Concentration average | Concentration RSD | Intensity average | Intensity RSD |
|----------------|-----------------------|-------------------|-------------------|---------------|
| 52Cr (mp_KED)  | 46.114 ppb            | 0.2 %             | 4,511,945 cps     | 0.2 %         |
| 53Cr (mp_KED)  | 46.131 ppb            | 0.5 %             | 550,166 cps       | 0.5 %         |
| 55Mn (mp_KED)  | 45.827 ppb            | 0.4 %             | 3,722,782 cps     | 0.4 %         |
| 56Fe (mp_KED)  | 45.732 ppb            | 0.2 %             | 4,854,464 cps     | 0.2 %         |
| 57Fe (mp_KED)  | 45.963 ppb            | 0.6 %             | 119,643 cps       | 0.6 %         |
| 59Co (mp_KED)  | 46.077 ppb            | 0.2 %             | 6,470,959 cps     | 0.2 %         |
| 60Ni (mp_KED)  | 46.361 ppb            | 0.7 %             | 1,538,046 cps     | 0.7 %         |
| 61Ni (mp_KED)  | 46.858 ppb            | 0.4 %             | 70,658 cps        | 0.4 %         |
| 62Ni (mp_KED)  | 46.514 ppb            | 0.5 %             | 236,192 cps       | 0.5 %         |
| 63Cu (mp_KED)  | 46.679 ppb            | 0.5 %             | 4,163,466 cps     | 0.5 %         |
| 65Cu (mp_KED)  | 46.321 ppb            | 0.5 %             | 2,037,212 cps     | 0.5 %         |
| 88Sr (mp_KED)  | 45.051 ppb            | 0.3 %             | 5,023,507 cps     | 0.3 %         |
| 105Pd (mp_KED) | 38.039 ppb            | 0.8 %             | 3,091,299 cps     | 0.8 %         |



# Basis Report

23-Feb-24 17:00:43



Start Time 22-Feb-24 12:37:26 Sample Type STD Comment <Comment> Final Quantity  
Label M28RuPdRe 100 ppb 300µL HNO3 30.10.2023 mtr Dilution Factor 1 Amount

| Category       | Concentration average | Concentration RSD | Intensity average | Intensity RSD |
|----------------|-----------------------|-------------------|-------------------|---------------|
| 52Cr (mp_KED)  | 89.511 ppb            | 0.5 %             | 8,757,709 cps     | 0.5 %         |
| 53Cr (mp_KED)  | 89.382 ppb            | 0.5 %             | 1,065,810 cps     | 0.5 %         |
| 55Mn (mp_KED)  | 88.830 ppb            | 0.8 %             | 7,216,041 cps     | 0.8 %         |
| 56Fe (mp_KED)  | 88.817 ppb            | 0.2 %             | 9,409,029 cps     | 0.2 %         |
| 57Fe (mp_KED)  | 88.957 ppb            | 0.4 %             | 231,315 cps       | 0.4 %         |
| 59Co (mp_KED)  | 88.829 ppb            | 0.3 %             | 12,474,564 cps    | 0.3 %         |
| 60Ni (mp_KED)  | 90.204 ppb            | 0.2 %             | 2,991,704 cps     | 0.2 %         |
| 61Ni (mp_KED)  | 89.696 ppb            | 0.6 %             | 135,223 cps       | 0.6 %         |
| 62Ni (mp_KED)  | 90.100 ppb            | 0.7 %             | 457,397 cps       | 0.7 %         |
| 63Cu (mp_KED)  | 89.585 ppb            | 0.3 %             | 7,988,626 cps     | 0.3 %         |
| 65Cu (mp_KED)  | 89.603 ppb            | 0.2 %             | 3,939,880 cps     | 0.2 %         |
| 88Sr (mp_KED)  | 88.296 ppb            | 0.8 %             | 9,845,526 cps     | 0.8 %         |
| 105Pd (mp_KED) | 83.441 ppb            | 0.1 %             | 6,760,704 cps     | 0.1 %         |

# Basis Report

23-Feb-24 17:00:43



Start Time 22-Feb-24 12:52:48 Sample Type STD Comment <Comment> Final Quantity  
Label M42 0 ppb 300µL HNO3 16.02.2024 mtr Dilution Factor 1 Amount

| Category       | Concentration average | Concentration RSD | Intensity average | Intensity RSD |
|----------------|-----------------------|-------------------|-------------------|---------------|
| 52Cr (mp_KED)  | 0.000 ppb             | 6.7 %             | 386 cps           | 6.7 %         |
| 53Cr (mp_KED)  | 0.000 ppb             | 9.7 %             | 185 cps           | 9.7 %         |
| 55Mn (mp_KED)  | 0.000 ppb             | 13.1 %            | 225 cps           | 13.1 %        |
| 56Fe (mp_KED)  | 0.000 ppb             | 0.9 %             | 20,148 cps        | 0.9 %         |
| 57Fe (mp_KED)  | 0.000 ppb             | 6.6 %             | 262 cps           | 6.6 %         |
| 59Co (mp_KED)  | 0.000 ppb             | 5.3 %             | 485 cps           | 5.3 %         |
| 60Ni (mp_KED)  | 0.000 ppb             | 3.2 %             | 885 cps           | 3.2 %         |
| 61Ni (mp_KED)  | 0.000 ppb             | 22.8 %            | 34 cps            | 22.8 %        |
| 62Ni (mp_KED)  | 0.000 ppb             | 5.2 %             | 130 cps           | 5.2 %         |
| 63Cu (mp_KED)  | 0.000 ppb             | 1.7 %             | 1,958 cps         | 1.7 %         |
| 65Cu (mp_KED)  | 0.000 ppb             | 3.9 %             | 985 cps           | 3.9 %         |
| 88Sr (mp_KED)  | 0.000 ppb             | 12.0 %            | 143 cps           | 12.0 %        |
| 105Pd (mp_KED) | 0.000 ppb             | 4.7 %             | 16,978 cps        | 4.7 %         |

# Basis Report

23-Feb-24 17:00:43



Start Time 22-Feb-24 12:57:55 Sample Type STD Comment <Comment> Final Quantity  
Label M42 1 ppb 300µL HNO3 16.02.2024 mtr Dilution Factor 1 Amount

| Category       | Concentration average | Concentration RSD | Intensity average | Intensity RSD |
|----------------|-----------------------|-------------------|-------------------|---------------|
| 52Cr (mp_KED)  | 0.981 ppb             | 0.9 %             | 96,392 cps        | 0.8 %         |
| 53Cr (mp_KED)  | 0.991 ppb             | 0.5 %             | 11,996 cps        | 0.5 %         |
| 55Mn (mp_KED)  | 0.981 ppb             | 1.1 %             | 79,889 cps        | 1.1 %         |
| 56Fe (mp_KED)  | 1.098 ppb             | 0.8 %             | 136,242 cps       | 0.7 %         |
| 57Fe (mp_KED)  | 1.122 ppb             | 1.6 %             | 3,177 cps         | 1.5 %         |
| 59Co (mp_KED)  | 0.968 ppb             | 0.8 %             | 136,454 cps       | 0.8 %         |
| 60Ni (mp_KED)  | 0.993 ppb             | 0.7 %             | 33,821 cps        | 0.7 %         |
| 61Ni (mp_KED)  | 1.008 ppb             | 0.3 %             | 1,553 cps         | 0.3 %         |
| 62Ni (mp_KED)  | 1.005 ppb             | 1.4 %             | 5,228 cps         | 1.4 %         |
| 63Cu (mp_KED)  | 0.983 ppb             | 0.6 %             | 89,628 cps        | 0.6 %         |
| 65Cu (mp_KED)  | 0.983 ppb             | 0.6 %             | 44,193 cps        | 0.5 %         |
| 88Sr (mp_KED)  | 0.965 ppb             | 0.8 %             | 107,718 cps       | 0.8 %         |
| 105Pd (mp_KED) | 0.885 ppb             | 0.6 %             | 88,544 cps        | 0.5 %         |

# Basis Report

23-Feb-24 17:00:43



Start Time 22-Feb-24 13:03:02 Sample Type STD Comment <Comment> Final Quantity  
Label M42 5 ppb 300µL HNO3 16.02.2024 mtr Dilution Factor 1 Amount

| Category       | Concentration average | Concentration RSD | Intensity average | Intensity RSD |
|----------------|-----------------------|-------------------|-------------------|---------------|
| 52Cr (mp_KED)  | 4.913 ppb             | 0.8 %             | 481,029 cps       | 0.8 %         |
| 53Cr (mp_KED)  | 4.958 ppb             | 0.6 %             | 59,295 cps        | 0.6 %         |
| 55Mn (mp_KED)  | 4.899 ppb             | 0.4 %             | 398,203 cps       | 0.4 %         |
| 56Fe (mp_KED)  | 4.858 ppb             | 0.5 %             | 533,661 cps       | 0.5 %         |
| 57Fe (mp_KED)  | 4.959 ppb             | 1.6 %             | 13,141 cps        | 1.5 %         |
| 59Co (mp_KED)  | 4.881 ppb             | 0.5 %             | 685,962 cps       | 0.5 %         |
| 60Ni (mp_KED)  | 4.984 ppb             | 0.8 %             | 166,151 cps       | 0.8 %         |
| 61Ni (mp_KED)  | 5.056 ppb             | 0.8 %             | 7,654 cps         | 0.8 %         |
| 62Ni (mp_KED)  | 4.983 ppb             | 0.4 %             | 25,417 cps        | 0.4 %         |
| 63Cu (mp_KED)  | 4.972 ppb             | 0.2 %             | 445,246 cps       | 0.2 %         |
| 65Cu (mp_KED)  | 4.952 ppb             | 0.4 %             | 218,691 cps       | 0.4 %         |
| 88Sr (mp_KED)  | 4.858 ppb             | 0.8 %             | 541,857 cps       | 0.8 %         |
| 105Pd (mp_KED) | 4.720 ppb             | 0.6 %             | 398,454 cps       | 0.6 %         |

# Basis Report

23-Feb-24 17:00:43



Start Time 22-Feb-24 13:08:09 Sample Type STD Comment <Comment> Final Quantity  
Label M42 10 ppb 300µL HNO3 16.02.2024 mtr Dilution Factor 1 Amount

| Category       | Concentration average | Concentration RSD | Intensity average | Intensity RSD |
|----------------|-----------------------|-------------------|-------------------|---------------|
| 52Cr (mp_KED)  | 9.842 ppb             | 1.1 %             | 963,228 cps       | 1.1 %         |
| 53Cr (mp_KED)  | 9.933 ppb             | 0.4 %             | 118,611 cps       | 0.4 %         |
| 55Mn (mp_KED)  | 9.854 ppb             | 0.9 %             | 800,646 cps       | 0.9 %         |
| 56Fe (mp_KED)  | 9.770 ppb             | 0.8 %             | 1,052,977 cps     | 0.8 %         |
| 57Fe (mp_KED)  | 10.027 ppb            | 0.6 %             | 26,305 cps        | 0.6 %         |
| 59Co (mp_KED)  | 9.792 ppb             | 0.8 %             | 1,375,543 cps     | 0.8 %         |
| 60Ni (mp_KED)  | 9.955 ppb             | 0.9 %             | 330,969 cps       | 0.9 %         |
| 61Ni (mp_KED)  | 10.036 ppb            | 0.6 %             | 15,161 cps        | 0.6 %         |
| 62Ni (mp_KED)  | 9.976 ppb             | 1.1 %             | 50,758 cps        | 1.1 %         |
| 63Cu (mp_KED)  | 9.966 ppb             | 0.6 %             | 890,479 cps       | 0.6 %         |
| 65Cu (mp_KED)  | 9.963 ppb             | 0.9 %             | 438,971 cps       | 0.9 %         |
| 88Sr (mp_KED)  | 9.694 ppb             | 0.9 %             | 1,081,046 cps     | 0.9 %         |
| 105Pd (mp_KED) | 7.938 ppb             | 0.5 %             | 658,550 cps       | 0.5 %         |

# Basis Report

23-Feb-24 17:00:43



Start Time 22-Feb-24 13:13:16 Sample Type STD Comment <Comment> Final Quantity  
Label M42 20 ppb 300µL HNO3 16.02.2024 mtr Dilution Factor 1 Amount

| Category       | Concentration average | Concentration RSD | Intensity average    | Intensity RSD |
|----------------|-----------------------|-------------------|----------------------|---------------|
| 52Cr (mp_KED)  | 19.428 ppb            | 0.8 %             | <b>1,901,134 cps</b> | 0.8 %         |
| 53Cr (mp_KED)  | 19.524 ppb            | 0.5 %             | 232,947 cps          | 0.5 %         |
| 55Mn (mp_KED)  | 19.467 ppb            | 0.3 %             | 1,581,594 cps        | 0.3 %         |
| 56Fe (mp_KED)  | 19.422 ppb            | 0.9 %             | <b>2,073,202 cps</b> | 0.9 %         |
| 57Fe (mp_KED)  | 19.558 ppb            | 0.5 %             | 51,061 cps           | 0.5 %         |
| 59Co (mp_KED)  | 19.504 ppb            | 0.4 %             | <b>2,739,361 cps</b> | 0.4 %         |
| 60Ni (mp_KED)  | 19.615 ppb            | 0.4 %             | 651,236 cps          | 0.4 %         |
| 61Ni (mp_KED)  | 19.773 ppb            | 0.6 %             | 29,836 cps           | 0.6 %         |
| 62Ni (mp_KED)  | 19.741 ppb            | 0.5 %             | 100,316 cps          | 0.5 %         |
| 63Cu (mp_KED)  | 19.589 ppb            | 0.7 %             | 1,748,348 cps        | 0.7 %         |
| 65Cu (mp_KED)  | 19.592 ppb            | 0.4 %             | 862,249 cps          | 0.4 %         |
| 88Sr (mp_KED)  | 19.490 ppb            | 0.5 %             | <b>2,173,384 cps</b> | 0.5 %         |
| 105Pd (mp_KED) | 12.510 ppb            | 0.4 %             | 1,028,085 cps        | 0.4 %         |

# Basis Report

23-Feb-24 17:00:43



Start Time 22-Feb-24 13:18:24 Sample Type STD Comment <Comment> Final Quantity  
Label M42 50 ppb 300µL HNO3 16.02.2024 mtr Dilution Factor 1 Amount

| Category       | Concentration average | Concentration RSD | Intensity average    | Intensity RSD |
|----------------|-----------------------|-------------------|----------------------|---------------|
| 52Cr (mp_KED)  | 49.528 ppb            | 0.6 %             | <b>4,845,955 cps</b> | 0.6 %         |
| 53Cr (mp_KED)  | 49.705 ppb            | 0.4 %             | 592,770 cps          | 0.4 %         |
| 55Mn (mp_KED)  | 49.576 ppb            | 0.6 %             | <b>4,027,355 cps</b> | 0.6 %         |
| 56Fe (mp_KED)  | 49.551 ppb            | 0.8 %             | <b>5,258,133 cps</b> | 0.8 %         |
| 57Fe (mp_KED)  | 49.412 ppb            | 0.5 %             | 128,603 cps          | 0.5 %         |
| 59Co (mp_KED)  | 49.420 ppb            | 0.7 %             | <b>6,940,457 cps</b> | 0.7 %         |
| 60Ni (mp_KED)  | 49.504 ppb            | 0.2 %             | 1,642,253 cps        | 0.2 %         |
| 61Ni (mp_KED)  | 49.638 ppb            | 0.7 %             | 74,848 cps           | 0.7 %         |
| 62Ni (mp_KED)  | 49.741 ppb            | 0.3 %             | 252,572 cps          | 0.3 %         |
| 63Cu (mp_KED)  | 49.684 ppb            | 0.6 %             | <b>4,431,382 cps</b> | 0.6 %         |
| 65Cu (mp_KED)  | 49.543 ppb            | 0.3 %             | 2,178,852 cps        | 0.3 %         |
| 88Sr (mp_KED)  | 49.731 ppb            | 0.3 %             | <b>5,545,396 cps</b> | 0.3 %         |
| 105Pd (mp_KED) | 47.778 ppb            | 0.5 %             | <b>3,878,462 cps</b> | 0.5 %         |

# Basis Report

23-Feb-24 17:00:43



Start Time 22-Feb-24 13:23:33 Sample Type STD Comment <Comment> Final Quantity  
Label M42 100 ppb 300µL HNO3 16.02.2024 mtr Dilution Factor 1 Amount

| Category       | Concentration average | Concentration RSD | Intensity average     | Intensity RSD |
|----------------|-----------------------|-------------------|-----------------------|---------------|
| 52Cr (mp_KED)  | 100.371 ppb           | 0.4 %             | <b>9,820,134 cps</b>  | 0.4 %         |
| 53Cr (mp_KED)  | 100.252 ppb           | 0.1 %             | 1,195,395 cps         | 0.1 %         |
| 55Mn (mp_KED)  | 100.338 ppb           | 0.6 %             | <b>8,150,857 cps</b>  | 0.6 %         |
| 56Fe (mp_KED)  | 100.369 ppb           | 0.6 %             | <b>10,630,193 cps</b> | 0.6 %         |
| 57Fe (mp_KED)  | 100.380 ppb           | 0.3 %             | 260,984 cps           | 0.3 %         |
| 59Co (mp_KED)  | 100.416 ppb           | 0.6 %             | <b>14,101,688 cps</b> | 0.6 %         |
| 60Ni (mp_KED)  | 100.330 ppb           | 0.5 %             | <b>3,327,468 cps</b>  | 0.5 %         |
| 61Ni (mp_KED)  | 100.220 ppb           | 0.3 %             | 151,084 cps           | 0.3 %         |
| 62Ni (mp_KED)  | 100.185 ppb           | 0.3 %             | 508,578 cps           | 0.3 %         |
| 63Cu (mp_KED)  | 100.245 ppb           | 0.3 %             | <b>8,938,992 cps</b>  | 0.3 %         |
| 65Cu (mp_KED)  | 100.316 ppb           | 0.4 %             | <b>4,410,807 cps</b>  | 0.4 %         |
| 88Sr (mp_KED)  | 100.274 ppb           | 0.3 %             | <b>11,181,186 cps</b> | 0.3 %         |
| 105Pd (mp_KED) | 101.332 ppb           | 0.3 %             | <b>8,206,712 cps</b>  | 0.3 %         |



# Basis Report

23-Feb-24 17:00:43



Start Time 22-Feb-24 13:28:40 Sample Type UPDATE CALIB Comment <Comment> Final Quantity  
Label M42 10 ppb 1500µL HNO3 16.02.2024 mtr Dilution Factor 1 Amount

| Category       | Concentration average | Concentration RSD | Intensity average | Intensity RSD |
|----------------|-----------------------|-------------------|-------------------|---------------|
| 52Cr (mp_KED)  | 9.842 ppb             | 0.5 %             | 969,872 cps       | 0.5 %         |
| 53Cr (mp_KED)  | 9.933 ppb             | 0.4 %             | 119,404 cps       | 0.4 %         |
| 55Mn (mp_KED)  | 9.854 ppb             | 0.5 %             | 802,589 cps       | 0.5 %         |
| 56Fe (mp_KED)  | 9.770 ppb             | 0.4 %             | 1,062,017 cps     | 0.4 %         |
| 57Fe (mp_KED)  | 10.027 ppb            | 0.4 %             | 26,228 cps        | 0.4 %         |
| 59Co (mp_KED)  | 9.792 ppb             | 0.5 %             | 1,385,060 cps     | 0.5 %         |
| 60Ni (mp_KED)  | 9.955 ppb             | 0.2 %             | 334,768 cps       | 0.2 %         |
| 61Ni (mp_KED)  | 10.036 ppb            | 0.9 %             | 15,309 cps        | 0.9 %         |
| 62Ni (mp_KED)  | 9.976 ppb             | 1.0 %             | 51,463 cps        | 1.0 %         |
| 63Cu (mp_KED)  | 9.966 ppb             | 0.4 %             | 902,929 cps       | 0.4 %         |
| 65Cu (mp_KED)  | 9.963 ppb             | 0.4 %             | 446,029 cps       | 0.4 %         |
| 88Sr (mp_KED)  | 9.694 ppb             | 0.5 %             | 1,093,472 cps     | 0.5 %         |
| 105Pd (mp_KED) | 7.938 ppb             | 0.6 %             | 821,313 cps       | 0.6 %         |

# Basis Report

23-Feb-24 17:00:43



Start Time 22-Feb-24 13:33:51 Sample Type UNKNOWN Comment <Comment> Final Quantity  
Label Rinse HNO3 2% Dilution Factor 1 Amount

| Category       | Concentration average | Concentration RSD | Intensity average | Intensity RSD |
|----------------|-----------------------|-------------------|-------------------|---------------|
| 52Cr (mp_KED)  | 0.050 ppb             | 1.1 %             | 5,296 cps         | 1.0 %         |
| 53Cr (mp_KED)  | 0.048 ppb             | 7.9 %             | 763 cps           | 6.0 %         |
| 55Mn (mp_KED)  | 0.005 ppb             | 15.6 %            | 608 cps           | 9.8 %         |
| 56Fe (mp_KED)  | 0.471 ppb             | 1.3 %             | 70,562 cps        | 0.9 %         |
| 57Fe (mp_KED)  | 0.502 ppb             | 2.4 %             | 1,561 cps         | 2.0 %         |
| 59Co (mp_KED)  | 0.000 ppb             | 73.5 %            | 538 cps           | 6.8 %         |
| 60Ni (mp_KED)  | 0.014 ppb             | 8.4 %             | 1,365 cps         | 2.9 %         |
| 61Ni (mp_KED)  | 0.019 ppb             | 12.4 %            | 64 cps            | 5.7 %         |
| 62Ni (mp_KED)  | 0.017 ppb             | 17.7 %            | 219 cps           | 7.1 %         |
| 63Cu (mp_KED)  | 0.002 ppb             | 31.1 %            | 2,155 cps         | 2.5 %         |
| 65Cu (mp_KED)  | 0.002 ppb             | 41.7 %            | 1,076 cps         | 2.9 %         |
| 88Sr (mp_KED)  | 0.001 ppb             | 27.2 %            | 287 cps           | 13.5 %        |
| 105Pd (mp_KED) | -0.036 ppb            | 19.1 %            | 17,551 cps        | 3.9 %         |

# Basis Report

23-Feb-24 17:00:43



Start Time 22-Feb-24 13:39:00 Sample Type UNKNOWN Comment <Comment> Final Quantity  
Label RZE-011 - 0.1mol/L KOH 1.7V vs RHE 48h 5.8ml - 10% Dilution Factor 1 Amount

| Category       | Concentration average | Concentration RSD | Intensity average  | Intensity RSD |
|----------------|-----------------------|-------------------|--------------------|---------------|
| 52Cr (mp_KED)  | 0.371 ppb             | 1.3 %             | 36,931 cps         | 1.3 %         |
| 53Cr (mp_KED)  | 0.447 ppb             | 1.6 %             | 5,554 cps          | 1.5 %         |
| 55Mn (mp_KED)  | 0.411 ppb             | 1.2 %             | 33,710 cps         | 1.2 %         |
| 56Fe (mp_KED)  | 4.164 ppb             | 2.4 %             | <b>464,281 cps</b> | 2.3 %         |
| 57Fe (mp_KED)  | 3.624 ppb             | 1.7 %             | 9,646 cps          | 1.6 %         |
| 59Co (mp_KED)  | 0.140 ppb             | 1.1 %             | 20,287 cps         | 1.1 %         |
| 60Ni (mp_KED)  | 0.406 ppb             | 1.5 %             | 14,502 cps         | 1.4 %         |
| 61Ni (mp_KED)  | 0.462 ppb             | 1.4 %             | 738 cps            | 1.4 %         |
| 62Ni (mp_KED)  | 0.482 ppb             | 1.5 %             | 2,611 cps          | 1.4 %         |
| 63Cu (mp_KED)  | 20.865 ppb            | 0.6 %             | 1,888,121 cps      | 0.6 %         |
| 65Cu (mp_KED)  | 20.326 ppb            | 0.3 %             | 908,877 cps        | 0.3 %         |
| 88Sr (mp_KED)  | 0.452 ppb             | 0.4 %             | 51,140 cps         | 0.4 %         |
| 105Pd (mp_KED) | -0.090 ppb            | 1.8 %             | 12,074 cps         | 1.4 %         |

# Basis Report

23-Feb-24 17:00:43



Start Time 22-Feb-24 13:44:08 Sample Type UNKNOWN Comment <Comment> Final Quantity  
Label RZE-011 - 0.1mol/L KOH 1.7V vs RHE 48h 5.8ml - 97% Dilution Factor 1 Amount

| Category       | Concentration average | Concentration RSD | Intensity average    | Intensity RSD |
|----------------|-----------------------|-------------------|----------------------|---------------|
| 52Cr (mp_KED)  | 0.676 ppb             | 0.4 %             | 66,972 cps           | 0.4 %         |
| 53Cr (mp_KED)  | 0.750 ppb             | 1.5 %             | 9,191 cps            | 1.4 %         |
| 55Mn (mp_KED)  | 0.752 ppb             | 0.7 %             | 61,471 cps           | 0.7 %         |
| 56Fe (mp_KED)  | 5.184 ppb             | 5.0 %             | <b>573,048 cps</b>   | 4.8 %         |
| 57Fe (mp_KED)  | 5.734 ppb             | 0.7 %             | 15,112 cps           | 0.7 %         |
| 59Co (mp_KED)  | 0.252 ppb             | 0.9 %             | 36,074 cps           | 0.8 %         |
| 60Ni (mp_KED)  | 2.081 ppb             | 0.6 %             | 70,669 cps           | 0.6 %         |
| 61Ni (mp_KED)  | 2.182 ppb             | 2.1 %             | 3,356 cps            | 2.1 %         |
| 62Ni (mp_KED)  | 2.345 ppb             | 1.3 %             | 12,198 cps           | 1.3 %         |
| 63Cu (mp_KED)  | 34.318 ppb            | 0.4 %             | <b>3,104,240 cps</b> | 0.4 %         |
| 65Cu (mp_KED)  | 32.999 ppb            | 0.4 %             | 1,474,951 cps        | 0.4 %         |
| 88Sr (mp_KED)  | 0.644 ppb             | 0.7 %             | 72,798 cps           | 0.7 %         |
| 105Pd (mp_KED) | -0.176 ppb            | 2.1 %             | 3,466 cps            | 10.7 %        |

# Basis Report

23-Feb-24 17:00:43



Start Time 22-Feb-24 13:49:15 Sample Type UNKNOWN Comment <Comment> Final Quantity  
Label Rinse HNO3 2% Dilution Factor 1 Amount

| Category       | Concentration average | Concentration RSD | Intensity average | Intensity RSD |
|----------------|-----------------------|-------------------|-------------------|---------------|
| 52Cr (mp_KED)  | 0.090 ppb             | 0.5 %             | 9,287 cps         | 0.5 %         |
| 53Cr (mp_KED)  | 0.081 ppb             | 8.6 %             | 1,153 cps         | 7.2 %         |
| 55Mn (mp_KED)  | 0.088 ppb             | 1.6 %             | 7,368 cps         | 1.5 %         |
| 56Fe (mp_KED)  | 0.868 ppb             | 0.8 %             | 112,854 cps       | 0.6 %         |
| 57Fe (mp_KED)  | 0.808 ppb             | 1.8 %             | 2,353 cps         | 1.6 %         |
| 59Co (mp_KED)  | 0.034 ppb             | 3.1 %             | 5,262 cps         | 2.8 %         |
| 60Ni (mp_KED)  | 0.034 ppb             | 8.6 %             | 2,025 cps         | 4.8 %         |
| 61Ni (mp_KED)  | 0.037 ppb             | 12.4 %            | 92 cps            | 7.7 %         |
| 62Ni (mp_KED)  | 0.035 ppb             | 14.1 %            | 311 cps           | 8.1 %         |
| 63Cu (mp_KED)  | 2.074 ppb             | 1.8 %             | 189,490 cps       | 1.8 %         |
| 65Cu (mp_KED)  | 1.948 ppb             | 2.3 %             | 88,006 cps        | 2.2 %         |
| 88Sr (mp_KED)  | 0.000 ppb             | 194.4 %           | 151 cps           | 7.9 %         |
| 105Pd (mp_KED) | -0.084 ppb            | 6.0 %             | 12,665 cps        | 4.0 %         |

# Basis Report

23-Feb-24 17:00:43



Start Time 22-Feb-24 13:54:22 Sample Type UNKNOWN Comment <Comment> Final Quantity  
Label RZE-021 - 0.1mol/L KOH 1.7V vs RHE 24h 1.4ml H2O compartment - Dilution Factor 1 Amount  
10%

| Category       | Concentration average | Concentration RSD | Intensity average  | Intensity RSD |
|----------------|-----------------------|-------------------|--------------------|---------------|
| 52Cr (mp_KED)  | 0.983 ppb             | 0.4 %             | 97,183 cps         | 0.4 %         |
| 53Cr (mp_KED)  | 1.052 ppb             | 0.4 %             | 12,812 cps         | 0.4 %         |
| 55Mn (mp_KED)  | 0.549 ppb             | 0.4 %             | 44,897 cps         | 0.4 %         |
| 56Fe (mp_KED)  | 2.606 ppb             | 3.0 %             | <b>298,118 cps</b> | 2.8 %         |
| 57Fe (mp_KED)  | 2.113 ppb             | 1.1 %             | 5,733 cps          | 1.0 %         |
| 59Co (mp_KED)  | 0.147 ppb             | 0.9 %             | 21,287 cps         | 0.9 %         |
| 60Ni (mp_KED)  | 0.555 ppb             | 0.6 %             | 19,522 cps         | 0.6 %         |
| 61Ni (mp_KED)  | 0.593 ppb             | 2.3 %             | 937 cps            | 2.2 %         |
| 62Ni (mp_KED)  | 0.612 ppb             | 1.2 %             | 3,280 cps          | 1.1 %         |
| 63Cu (mp_KED)  | 12.415 ppb            | 0.6 %             | 1,124,277 cps      | 0.6 %         |
| 65Cu (mp_KED)  | 12.009 ppb            | 0.7 %             | 537,412 cps        | 0.7 %         |
| 88Sr (mp_KED)  | 0.243 ppb             | 0.6 %             | 27,560 cps         | 0.6 %         |
| 105Pd (mp_KED) | -0.076 ppb            | 6.3 %             | 13,546 cps         | 3.6 %         |

# Basis Report

23-Feb-24 17:00:43



Start Time 22-Feb-24 13:59:29 Sample Type UNKNOWN Comment <Comment> Final Quantity  
Label RZE-021 - 0.1mol/L KOH 1.7V vs RHE 24h 1.4ml H2O compartment - Dilution Factor 1 Amount  
50%

| Category       | Concentration average | Concentration RSD | Intensity average  | Intensity RSD |
|----------------|-----------------------|-------------------|--------------------|---------------|
| 52Cr (mp_KED)  | 2.587 ppb             | 3.9 %             | <b>255,198 cps</b> | 3.9 %         |
| 53Cr (mp_KED)  | 2.985 ppb             | 0.6 %             | 36,016 cps         | 0.6 %         |
| 55Mn (mp_KED)  | 1.304 ppb             | 0.3 %             | 106,408 cps        | 0.3 %         |
| 56Fe (mp_KED)  | 6.362 ppb             | 0.9 %             | <b>698,664 cps</b> | 0.8 %         |
| 57Fe (mp_KED)  | 6.445 ppb             | 0.4 %             | 16,951 cps         | 0.4 %         |
| 59Co (mp_KED)  | 0.294 ppb             | 0.7 %             | 42,017 cps         | 0.7 %         |
| 60Ni (mp_KED)  | 1.238 ppb             | 0.3 %             | 42,419 cps         | 0.3 %         |
| 61Ni (mp_KED)  | 1.514 ppb             | 3.2 %             | 2,339 cps          | 3.2 %         |
| 62Ni (mp_KED)  | 1.974 ppb             | 3.0 %             | 10,290 cps         | 3.0 %         |
| 63Cu (mp_KED)  | 21.828 ppb            | 0.6 %             | 1,975,227 cps      | 0.6 %         |
| 65Cu (mp_KED)  | 21.444 ppb            | 0.8 %             | 958,801 cps        | 0.8 %         |
| 88Sr (mp_KED)  | 0.472 ppb             | 1.7 %             | 53,329 cps         | 1.7 %         |
| 105Pd (mp_KED) | -0.157 ppb            | 48.1 %            | <b>5,324 cps</b>   | 143.1 %       |

# Basis Report

23-Feb-24 17:00:43



Start Time 22-Feb-24 14:04:37 Sample Type UNKNOWN Comment <Comment> Final Quantity  
Label Rinse HNO3 2% Dilution Factor 1 Amount

| Category       | Concentration average | Concentration RSD | Intensity average | Intensity RSD |
|----------------|-----------------------|-------------------|-------------------|---------------|
| 52Cr (mp_KED)  | 0.080 ppb             | 1.9 %             | 8,251 cps         | 1.8 %         |
| 53Cr (mp_KED)  | 0.071 ppb             | 3.6 %             | 1,040 cps         | 3.0 %         |
| 55Mn (mp_KED)  | 0.072 ppb             | 2.2 %             | 6,090 cps         | 2.1 %         |
| 56Fe (mp_KED)  | 0.890 ppb             | 1.6 %             | 115,166 cps       | 1.3 %         |
| 57Fe (mp_KED)  | 0.811 ppb             | 1.9 %             | 2,361 cps         | 1.7 %         |
| 59Co (mp_KED)  | 0.070 ppb             | 0.8 %             | 10,391 cps        | 0.8 %         |
| 60Ni (mp_KED)  | 0.044 ppb             | 3.5 %             | 2,386 cps         | 2.2 %         |
| 61Ni (mp_KED)  | 0.053 ppb             | 33.1 %            | 116 cps           | 23.2 %        |
| 62Ni (mp_KED)  | 0.045 ppb             | 8.7 %             | 366 cps           | 5.5 %         |
| 63Cu (mp_KED)  | 0.750 ppb             | 3.5 %             | 69,764 cps        | 3.4 %         |
| 65Cu (mp_KED)  | 0.708 ppb             | 3.0 %             | 32,627 cps        | 2.9 %         |
| 88Sr (mp_KED)  | 0.000 ppb             | 268.4 %           | 147 cps           | 4.3 %         |
| 105Pd (mp_KED) | -0.119 ppb            | 2.8 %             | 9,155 cps         | 3.7 %         |



# Basis Report

23-Feb-24 17:00:43



Start Time 22-Feb-24 14:09:44 Sample Type UNKNOWN Comment <Comment> Final Quantity  
Label 573 Pd Sons 300µl HNO3 - 0.01% Dilution Factor 1 Amount

| Category       | Concentration average | Concentration RSD | Intensity average    | Intensity RSD |
|----------------|-----------------------|-------------------|----------------------|---------------|
| 52Cr (mp_KED)  | 0.010 ppb             | 2.6 %             | 1,403 cps            | 1.9 %         |
| 53Cr (mp_KED)  | 0.000 ppb             | 1,514.5 %         | 187 cps              | 12.3 %        |
| 55Mn (mp_KED)  | 0.065 ppb             | 1.5 %             | 5,501 cps            | 1.4 %         |
| 56Fe (mp_KED)  | 0.096 ppb             | 2.0 %             | 30,570 cps           | 0.7 %         |
| 57Fe (mp_KED)  | 0.025 ppb             | 34.8 %            | 325 cps              | 6.9 %         |
| 59Co (mp_KED)  | 0.120 ppb             | 1.1 %             | 17,415 cps           | 1.0 %         |
| 60Ni (mp_KED)  | 0.035 ppb             | 3.0 %             | 2,057 cps            | 1.7 %         |
| 61Ni (mp_KED)  | 0.031 ppb             | 8.4 %             | 83 cps               | 4.9 %         |
| 62Ni (mp_KED)  | 0.030 ppb             | 5.0 %             | 288 cps              | 2.7 %         |
| 63Cu (mp_KED)  | 0.499 ppb             | 3.4 %             | 47,082 cps           | 3.3 %         |
| 65Cu (mp_KED)  | 0.474 ppb             | 4.1 %             | 22,183 cps           | 3.9 %         |
| 88Sr (mp_KED)  | 0.001 ppb             | 18.8 %            | 282 cps              | 9.1 %         |
| 105Pd (mp_KED) | 62.848 ppb            | 0.3 %             | <b>6,355,953 cps</b> | 0.3 %         |

# Basis Report

23-Feb-24 17:00:43



Start Time 22-Feb-24 14:14:50 Sample Type UNKNOWN Comment <Comment> Final Quantity  
Label 573 Pd Sons 300µl HNO3 - 0.1% Dilution Factor 1 Amount

| Category       | Concentration average | Concentration RSD | Intensity average     | Intensity RSD |
|----------------|-----------------------|-------------------|-----------------------|---------------|
| 52Cr (mp_KED)  | 0.022 ppb             | 1.3 %             | 2,602 cps             | 1.1 %         |
| 53Cr (mp_KED)  | 0.004 ppb             | 7.0 %             | 228 cps               | 1.3 %         |
| 55Mn (mp_KED)  | 0.061 ppb             | 2.0 %             | 5,162 cps             | 1.9 %         |
| 56Fe (mp_KED)  | 0.179 ppb             | 1.0 %             | 39,449 cps            | 0.5 %         |
| 57Fe (mp_KED)  | 0.115 ppb             | 4.9 %             | 559 cps               | 2.6 %         |
| 59Co (mp_KED)  | 0.567 ppb             | 0.9 %             | 80,677 cps            | 0.9 %         |
| 60Ni (mp_KED)  | 0.051 ppb             | 1.5 %             | 2,593 cps             | 1.0 %         |
| 61Ni (mp_KED)  | 0.057 ppb             | 9.0 %             | 122 cps               | 6.4 %         |
| 62Ni (mp_KED)  | 0.047 ppb             | 10.3 %            | 371 cps               | 6.7 %         |
| 63Cu (mp_KED)  | 0.373 ppb             | 2.8 %             | 35,697 cps            | 2.6 %         |
| 65Cu (mp_KED)  | 0.355 ppb             | 2.1 %             | 16,878 cps            | 2.0 %         |
| 88Sr (mp_KED)  | 0.011 ppb             | 2.3 %             | 1,359 cps             | 2.1 %         |
| 105Pd (mp_KED) | 682.873 ppb           | 0.8 %             | <b>68,851,914 cps</b> | 0.8 %         |

# Basis Report

23-Feb-24 17:00:43



Start Time 22-Feb-24 14:19:56 Sample Type UNKNOWN Comment <Comment> Final Quantity  
Label 573 Pd Sons 300µl HNO3 - 1% Dilution Factor 1 Amount

| Category       | Concentration average | Concentration RSD | Intensity average      | Intensity RSD |
|----------------|-----------------------|-------------------|------------------------|---------------|
| 52Cr (mp_KED)  | 0.177 ppb             | 1.5 %             | 17,844 cps             | 1.5 %         |
| 53Cr (mp_KED)  | 0.074 ppb             | 3.5 %             | 1,077 cps              | 2.9 %         |
| 55Mn (mp_KED)  | 0.060 ppb             | 1.8 %             | 5,133 cps              | 1.7 %         |
| 56Fe (mp_KED)  | 0.385 ppb             | 1.0 %             | 61,327 cps             | 0.7 %         |
| 57Fe (mp_KED)  | 0.316 ppb             | 3.4 %             | 1,079 cps              | 2.6 %         |
| 59Co (mp_KED)  | 5.607 ppb             | 0.4 %             | 793,265 cps            | 0.4 %         |
| 60Ni (mp_KED)  | 0.193 ppb             | 1.7 %             | 7,379 cps              | 1.5 %         |
| 61Ni (mp_KED)  | 0.202 ppb             | 4.7 %             | 343 cps                | 4.2 %         |
| 62Ni (mp_KED)  | 0.196 ppb             | 4.9 %             | 1,141 cps              | 4.3 %         |
| 63Cu (mp_KED)  | 0.348 ppb             | 1.0 %             | 33,485 cps             | 0.9 %         |
| 65Cu (mp_KED)  | 0.339 ppb             | 0.6 %             | 16,138 cps             | 0.6 %         |
| 88Sr (mp_KED)  | 0.110 ppb             | 1.1 %             | 12,555 cps             | 1.1 %         |
| 105Pd (mp_KED) | 7,843.177 ppb         | 1.0 %             | <b>790,580,834 cps</b> | 1.0 %         |

# Basis Report

23-Feb-24 17:00:43



Start Time 22-Feb-24 14:25:03 Sample Type UNKNOWN Comment <Comment> Final Quantity  
Label 573 Pd Sons 300µl HNO3 - 10% Dilution Factor 1 Amount

| Category       | Concentration average | Concentration RSD | Intensity average        | Intensity RSD |
|----------------|-----------------------|-------------------|--------------------------|---------------|
| 52Cr (mp_KED)  | 1.409 ppb             | 2.1 %             | 139,238 cps              | 2.1 %         |
| 53Cr (mp_KED)  | 0.500 ppb             | 2.5 %             | 6,192 cps                | 2.4 %         |
| 55Mn (mp_KED)  | 0.070 ppb             | 0.9 %             | 5,893 cps                | 0.9 %         |
| 56Fe (mp_KED)  | 1.414 ppb             | 0.2 %             | 171,129 cps              | 0.1 %         |
| 57Fe (mp_KED)  | 1.523 ppb             | 1.4 %             | 4,205 cps                | 1.3 %         |
| 59Co (mp_KED)  | 36.409 ppb            | 0.7 %             | <b>5,148,676 cps</b>     | 0.7 %         |
| 60Ni (mp_KED)  | 1.001 ppb             | 0.6 %             | 34,462 cps               | 0.6 %         |
| 61Ni (mp_KED)  | 1.005 ppb             | 0.7 %             | 1,565 cps                | 0.7 %         |
| 62Ni (mp_KED)  | 1.007 ppb             | 2.5 %             | 5,315 cps                | 2.4 %         |
| 63Cu (mp_KED)  | 0.800 ppb             | 0.6 %             | 74,295 cps               | 0.6 %         |
| 65Cu (mp_KED)  | 0.782 ppb             | 0.9 %             | 35,938 cps               | 0.8 %         |
| 88Sr (mp_KED)  | 0.617 ppb             | 0.6 %             | 69,702 cps               | 0.6 %         |
| 105Pd (mp_KED) | 49,674.243 ppb        | 0.4 %             | <b>5,006,978,384 cps</b> | 0.4 %         |

# Basis Report

23-Feb-24 17:00:43



Start Time 22-Feb-24 14:30:10 Sample Type UNKNOWN Comment <Comment> Final Quantity  
Label Rinse HNO3 2% Dilution Factor 1 Amount

| Category       | Concentration average | Concentration RSD | Intensity average | Intensity RSD |
|----------------|-----------------------|-------------------|-------------------|---------------|
| 52Cr (mp_KED)  | 0.095 ppb             | 7.0 %             | 9,709 cps         | 6.7 %         |
| 53Cr (mp_KED)  | 0.060 ppb             | 7.0 %             | 908 cps           | 5.6 %         |
| 55Mn (mp_KED)  | 0.056 ppb             | 1.1 %             | 4,779 cps         | 1.1 %         |
| 56Fe (mp_KED)  | 0.687 ppb             | 2.0 %             | 93,587 cps        | 1.5 %         |
| 57Fe (mp_KED)  | 0.658 ppb             | 3.0 %             | 1,965 cps         | 2.6 %         |
| 59Co (mp_KED)  | 0.065 ppb             | 1.9 %             | 9,682 cps         | 1.8 %         |
| 60Ni (mp_KED)  | 0.069 ppb             | 1.9 %             | 3,198 cps         | 1.4 %         |
| 61Ni (mp_KED)  | 0.069 ppb             | 8.5 %             | 140 cps           | 6.4 %         |
| 62Ni (mp_KED)  | 0.065 ppb             | 7.3 %             | 469 cps           | 5.3 %         |
| 63Cu (mp_KED)  | 0.148 ppb             | 2.1 %             | 15,364 cps        | 1.8 %         |
| 65Cu (mp_KED)  | 0.144 ppb             | 1.4 %             | 7,418 cps         | 1.2 %         |
| 88Sr (mp_KED)  | 0.000 ppb             | 33.7 %            | 129 cps           | 4.2 %         |
| 105Pd (mp_KED) | 5.908 ppb             | 8.6 %             | 616,638 cps       | 8.3 %         |

# Basis Report

23-Feb-24 17:00:43



Start Time 22-Feb-24 14:35:17 Sample Type UNKNOWN Comment <Comment> Final Quantity  
Label Rinse HNO3 2% Dilution Factor 1 Amount

| Category       | Concentration average | Concentration RSD | Intensity average | Intensity RSD |
|----------------|-----------------------|-------------------|-------------------|---------------|
| 52Cr (mp_KED)  | 0.064 ppb             | 0.6 %             | 6,710 cps         | 0.5 %         |
| 53Cr (mp_KED)  | 0.053 ppb             | 4.2 %             | 820 cps           | 3.2 %         |
| 55Mn (mp_KED)  | 0.050 ppb             | 2.2 %             | 4,321 cps         | 2.1 %         |
| 56Fe (mp_KED)  | 0.637 ppb             | 1.2 %             | 88,221 cps        | 0.9 %         |
| 57Fe (mp_KED)  | 0.628 ppb             | 1.1 %             | 1,888 cps         | 0.9 %         |
| 59Co (mp_KED)  | 0.076 ppb             | 1.9 %             | 11,219 cps        | 1.8 %         |
| 60Ni (mp_KED)  | 0.096 ppb             | 2.1 %             | 4,119 cps         | 1.7 %         |
| 61Ni (mp_KED)  | 0.101 ppb             | 7.2 %             | 189 cps           | 5.9 %         |
| 62Ni (mp_KED)  | 0.089 ppb             | 1.1 %             | 588 cps           | 0.8 %         |
| 63Cu (mp_KED)  | 0.117 ppb             | 2.3 %             | 12,536 cps        | 1.9 %         |
| 65Cu (mp_KED)  | 0.112 ppb             | 2.1 %             | 5,990 cps         | 1.7 %         |
| 88Sr (mp_KED)  | 0.000 ppb             | 39.1 %            | 131 cps           | 4.2 %         |
| 105Pd (mp_KED) | 1.500 ppb             | 5.6 %             | 172,325 cps       | 4.9 %         |

# Basis Report

23-Feb-24 17:00:43



Start Time 22-Feb-24 14:40:24 Sample Type UNKNOWN Comment <Comment> Final Quantity  
Label BL 572 - 573 Dilution Factor 1 Amount

| Category       | Concentration average | Concentration RSD | Intensity average | Intensity RSD |
|----------------|-----------------------|-------------------|-------------------|---------------|
| 52Cr (mp_KED)  | 0.007 ppb             | 3.9 %             | 1,045 cps         | 2.5 %         |
| 53Cr (mp_KED)  | -0.003 ppb            | 36.1 %            | 152 cps           | 7.9 %         |
| 55Mn (mp_KED)  | 0.041 ppb             | 1.4 %             | 3,549 cps         | 1.3 %         |
| 56Fe (mp_KED)  | 0.028 ppb             | 6.2 %             | 23,294 cps        | 0.8 %         |
| 57Fe (mp_KED)  | 0.021 ppb             | 36.5 %            | 316 cps           | 6.4 %         |
| 59Co (mp_KED)  | 0.084 ppb             | 0.9 %             | 12,424 cps        | 0.9 %         |
| 60Ni (mp_KED)  | 0.116 ppb             | 1.5 %             | 4,778 cps         | 1.2 %         |
| 61Ni (mp_KED)  | 0.118 ppb             | 7.3 %             | 215 cps           | 6.1 %         |
| 62Ni (mp_KED)  | 0.114 ppb             | 3.1 %             | 720 cps           | 2.6 %         |
| 63Cu (mp_KED)  | 0.107 ppb             | 2.5 %             | 11,634 cps        | 2.1 %         |
| 65Cu (mp_KED)  | 0.103 ppb             | 1.3 %             | 5,606 cps         | 1.0 %         |
| 88Sr (mp_KED)  | 0.000 ppb             | 46.1 %            | 162 cps           | 4.8 %         |
| 105Pd (mp_KED) | 1.128 ppb             | 6.0 %             | 134,831 cps       | 5.1 %         |

# Basis Report

23-Feb-24 17:00:43



Start Time 22-Feb-24 14:45:32 Sample Type UNKNOWN Comment <Comment> Final Quantity  
Label BL 573 Dilution Factor 1 Amount

| Category       | Concentration average | Concentration RSD | Intensity average | Intensity RSD |
|----------------|-----------------------|-------------------|-------------------|---------------|
| 52Cr (mp_KED)  | 0.004 ppb             | 15.2 %            | 812 cps           | 7.9 %         |
| 53Cr (mp_KED)  | -0.005 ppb            | 20.1 %            | 130 cps           | 8.6 %         |
| 55Mn (mp_KED)  | 0.036 ppb             | 1.2 %             | 3,139 cps         | 1.1 %         |
| 56Fe (mp_KED)  | 0.011 ppb             | 13.1 %            | 21,510 cps        | 0.7 %         |
| 57Fe (mp_KED)  | 0.001 ppb             | 933.7 %           | 263 cps           | 6.3 %         |
| 59Co (mp_KED)  | 0.086 ppb             | 1.0 %             | 12,585 cps        | 0.9 %         |
| 60Ni (mp_KED)  | 0.132 ppb             | 1.8 %             | 5,310 cps         | 1.5 %         |
| 61Ni (mp_KED)  | 0.138 ppb             | 11.2 %            | 244 cps           | 9.6 %         |
| 62Ni (mp_KED)  | 0.131 ppb             | 1.4 %             | 804 cps           | 1.2 %         |
| 63Cu (mp_KED)  | 0.074 ppb             | 2.7 %             | 8,646 cps         | 2.1 %         |
| 65Cu (mp_KED)  | 0.069 ppb             | 6.6 %             | 4,080 cps         | 4.9 %         |
| 88Sr (mp_KED)  | 0.000 ppb             | 20.2 %            | 175 cps           | 3.5 %         |
| 105Pd (mp_KED) | 0.741 ppb             | 9.7 %             | 95,846 cps        | 7.5 %         |



# Basis Report

23-Feb-24 17:00:43



Start Time 22-Feb-24 14:50:40 Sample Type UNKNOWN Comment <Comment> Final Quantity  
Label BL H2O Dilution Factor 1 Amount

| Category       | Concentration average | Concentration RSD | Intensity average | Intensity RSD |
|----------------|-----------------------|-------------------|-------------------|---------------|
| 52Cr (mp_KED)  | 0.002 ppb             | 10.3 %            | 613 cps           | 3.8 %         |
| 53Cr (mp_KED)  | -0.006 ppb            | 6.4 %             | 113 cps           | 4.1 %         |
| 55Mn (mp_KED)  | 0.032 ppb             | 2.2 %             | 2,844 cps         | 2.0 %         |
| 56Fe (mp_KED)  | -0.034 ppb            | 2.9 %             | 16,672 cps        | 0.6 %         |
| 57Fe (mp_KED)  | -0.033 ppb            | 10.7 %            | 175 cps           | 5.3 %         |
| 59Co (mp_KED)  | 0.091 ppb             | 1.3 %             | 13,354 cps        | 1.3 %         |
| 60Ni (mp_KED)  | 0.156 ppb             | 2.6 %             | 6,121 cps         | 2.2 %         |
| 61Ni (mp_KED)  | 0.160 ppb             | 5.4 %             | 278 cps           | 4.8 %         |
| 62Ni (mp_KED)  | 0.139 ppb             | 4.8 %             | 844 cps           | 4.1 %         |
| 63Cu (mp_KED)  | 0.053 ppb             | 0.7 %             | 6,787 cps         | 0.5 %         |
| 65Cu (mp_KED)  | 0.050 ppb             | 3.2 %             | 3,213 cps         | 2.2 %         |
| 88Sr (mp_KED)  | 0.000 ppb             | 173.1 %           | 131 cps           | 18.4 %        |
| 105Pd (mp_KED) | -0.174 ppb            | 0.5 %             | 3,661 cps         | 2.2 %         |

# Basis Report

23-Feb-24 17:00:43



Start Time 22-Feb-24 14:55:46 Sample Type UNKNOWN Comment <Comment> Final Quantity  
Label Rinse HNO3 2% Dilution Factor 1 Amount

| Category       | Concentration average | Concentration RSD | Intensity average | Intensity RSD |
|----------------|-----------------------|-------------------|-------------------|---------------|
| 52Cr (mp_KED)  | 0.060 ppb             | 0.3 %             | 6,285 cps         | 0.3 %         |
| 53Cr (mp_KED)  | 0.051 ppb             | 4.1 %             | 800 cps           | 3.2 %         |
| 55Mn (mp_KED)  | 0.033 ppb             | 1.7 %             | 2,896 cps         | 1.5 %         |
| 56Fe (mp_KED)  | 0.616 ppb             | 0.4 %             | 85,951 cps        | 0.3 %         |
| 57Fe (mp_KED)  | 0.629 ppb             | 3.0 %             | 1,890 cps         | 2.6 %         |
| 59Co (mp_KED)  | 0.087 ppb             | 1.7 %             | 12,837 cps        | 1.6 %         |
| 60Ni (mp_KED)  | 0.176 ppb             | 1.2 %             | 6,786 cps         | 1.1 %         |
| 61Ni (mp_KED)  | 0.181 ppb             | 5.9 %             | 311 cps           | 5.3 %         |
| 62Ni (mp_KED)  | 0.172 ppb             | 3.9 %             | 1,018 cps         | 3.4 %         |
| 63Cu (mp_KED)  | 0.064 ppb             | 1.4 %             | 7,747 cps         | 1.0 %         |
| 65Cu (mp_KED)  | 0.061 ppb             | 0.8 %             | 3,706 cps         | 0.6 %         |
| 88Sr (mp_KED)  | 0.000 ppb             | 91.3 %            | 137 cps           | 5.1 %         |
| 105Pd (mp_KED) | 0.361 ppb             | 4.9 %             | 57,592 cps        | 3.1 %         |

# Basis Report

23-Feb-24 17:00:43



Start Time 22-Feb-24 15:00:53 Sample Type UPDATE CALIB Comment <Comment> Final Quantity  
Label M42 10 ppb 1500µL HNO3 16.02.2024 mtr Dilution Factor 1 Amount

| Category       | Concentration average | Concentration RSD | Intensity average | Intensity RSD |
|----------------|-----------------------|-------------------|-------------------|---------------|
| 52Cr (mp_KED)  | 9.842 ppb             | 0.9 %             | 1,137,358 cps     | 0.9 %         |
| 53Cr (mp_KED)  | 9.933 ppb             | 0.9 %             | 138,694 cps       | 0.9 %         |
| 55Mn (mp_KED)  | 9.854 ppb             | 0.5 %             | 979,256 cps       | 0.5 %         |
| 56Fe (mp_KED)  | 9.770 ppb             | 0.8 %             | 1,260,432 cps     | 0.8 %         |
| 57Fe (mp_KED)  | 10.027 ppb            | 1.2 %             | 30,833 cps        | 1.2 %         |
| 59Co (mp_KED)  | 9.792 ppb             | 0.5 %             | 1,601,718 cps     | 0.5 %         |
| 60Ni (mp_KED)  | 9.955 ppb             | 1.0 %             | 383,098 cps       | 1.0 %         |
| 61Ni (mp_KED)  | 10.036 ppb            | 1.2 %             | 17,566 cps        | 1.1 %         |
| 62Ni (mp_KED)  | 9.976 ppb             | 1.2 %             | 58,837 cps        | 1.2 %         |
| 63Cu (mp_KED)  | 9.966 ppb             | 0.7 %             | 1,016,764 cps     | 0.7 %         |
| 65Cu (mp_KED)  | 9.963 ppb             | 1.0 %             | 502,677 cps       | 1.0 %         |
| 88Sr (mp_KED)  | 9.694 ppb             | 0.7 %             | 1,272,277 cps     | 0.7 %         |
| 105Pd (mp_KED) | 7.938 ppb             | 0.4 %             | 918,306 cps       | 0.4 %         |

# Basis Report

23-Feb-24 17:00:43



Start Time 22-Feb-24 15:06:03 Sample Type UNKNOWN Comment <Comment> Final Quantity  
Label Rinse HNO3 2% Dilution Factor 1 Amount

| Category       | Concentration average | Concentration RSD | Intensity average | Intensity RSD |
|----------------|-----------------------|-------------------|-------------------|---------------|
| 52Cr (mp_KED)  | 0.051 ppb             | 2.4 %             | 6,336 cps         | 2.3 %         |
| 53Cr (mp_KED)  | 0.041 ppb             | 9.9 %             | 786 cps           | 7.2 %         |
| 55Mn (mp_KED)  | 0.023 ppb             | 1.6 %             | 2,562 cps         | 1.4 %         |
| 56Fe (mp_KED)  | 0.493 ppb             | 1.9 %             | 86,467 cps        | 1.4 %         |
| 57Fe (mp_KED)  | 0.524 ppb             | 2.3 %             | 1,904 cps         | 1.9 %         |
| 59Co (mp_KED)  | 0.072 ppb             | 1.9 %             | 12,416 cps        | 1.8 %         |
| 60Ni (mp_KED)  | 0.171 ppb             | 1.5 %             | 7,600 cps         | 1.3 %         |
| 61Ni (mp_KED)  | 0.174 ppb             | 1.4 %             | 343 cps           | 1.2 %         |
| 62Ni (mp_KED)  | 0.163 ppb             | 3.3 %             | 1,112 cps         | 2.9 %         |
| 63Cu (mp_KED)  | 0.046 ppb             | 0.8 %             | 6,930 cps         | 0.5 %         |
| 65Cu (mp_KED)  | 0.044 ppb             | 1.9 %             | 3,332 cps         | 1.3 %         |
| 88Sr (mp_KED)  | 0.000 ppb             | 134.6 %           | 149 cps           | 17.7 %        |
| 105Pd (mp_KED) | 0.304 ppb             | 5.3 %             | 57,973 cps        | 3.2 %         |

# Basis Report

23-Feb-24 17:00:43



Start Time 22-Feb-24 15:11:10 Sample Type UNKNOWN Comment <Comment> Final Quantity  
Label pure water Dilution Factor 1 Amount

| Category       | Concentration average | Concentration RSD | Intensity average | Intensity RSD |
|----------------|-----------------------|-------------------|-------------------|---------------|
| 52Cr (mp_KED)  | 0.004 ppb             | 5.9 %             | 886 cps           | 2.8 %         |
| 53Cr (mp_KED)  | -0.005 ppb            | 24.9 %            | 148 cps           | 11.5 %        |
| 55Mn (mp_KED)  | 0.041 ppb             | 8.0 %             | 4,353 cps         | 7.5 %         |
| 56Fe (mp_KED)  | -0.050 ppb            | 2.2 %             | 17,785 cps        | 0.8 %         |
| 57Fe (mp_KED)  | -0.038 ppb            | 15.1 %            | 191 cps           | 9.1 %         |
| 59Co (mp_KED)  | 0.074 ppb             | 1.1 %             | 12,680 cps        | 1.0 %         |
| 60Ni (mp_KED)  | 0.534 ppb             | 9.6 %             | 21,533 cps        | 9.2 %         |
| 61Ni (mp_KED)  | 0.537 ppb             | 10.0 %            | 977 cps           | 9.6 %         |
| 62Ni (mp_KED)  | 0.524 ppb             | 8.6 %             | 3,236 cps         | 8.2 %         |
| 63Cu (mp_KED)  | 0.159 ppb             | 8.7 %             | 18,472 cps        | 7.6 %         |
| 65Cu (mp_KED)  | 0.157 ppb             | 8.5 %             | 9,047 cps         | 7.5 %         |
| 88Sr (mp_KED)  | 0.017 ppb             | 10.4 %            | 2,446 cps         | 9.7 %         |
| 105Pd (mp_KED) | -0.203 ppb            | 36.1 %            | <b>839 cps</b>    | 982.9 %       |

